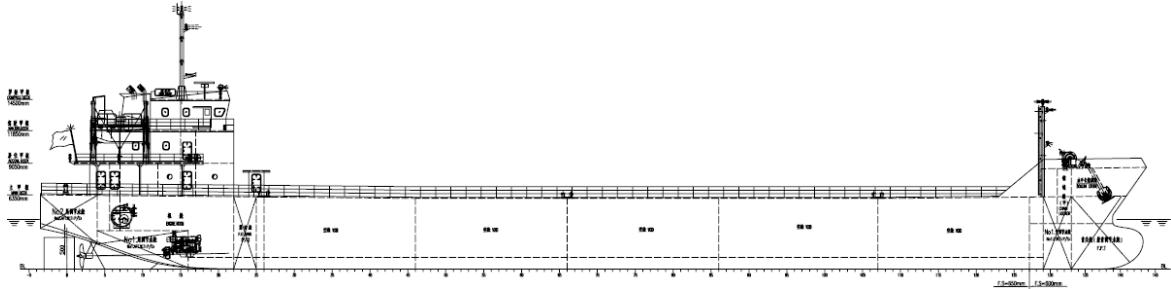




JANTLE MARINE

www.jantlemarine.com

3500DWT Self Propelled Oil Barge



General Description

The vessel is an palm oil tanker, with 2 M/Es with reversible gearbox, 2 fixed pitch propellers, M/Es aft mounted with raked bulbous bow, transom stern and double hull / bottom in way of cargo and cargo pump room area. Palm oil (FP above 60°C) service in coastal water.

Principal Particulars

Length overall : 94.88M
Beam moulded : 15.00M
Depth moulded : 6.05M
Draft designed : 4.16M

Capacity

Cargo oil : ~4,000M3
Complement : 14 men

Performance

Deadweight : 3500T
Speed : Min. 8.1 knots @ 85% MCR
Endurance : 2,000NM

Class Notation

RINA C+ Chemical Tanker (Palm oil with FP > 60°C), Type 2, ESP, Coastal Navigation

Registry

Indonesia

Main Engine & Gear Box

2sets, Weichai X6170ZC-21, 456kW, 1500rpm
2 sets, GQST3438 or HCT400A, reduction ratio: 6.09:1

Other Equipment

Aux. Generators : 2 sets, 100kW, AC400V*3*50Hz
Boiler : 1 set, Oil-fire Steam type, 2000kg/h@0.7Mpa
Cargo oil pumps : 2 sets, Twin-screw type driven by diesel engine, 300m³*0.8Mpa
Striping pump : 1 set, Twin-screw type driven by electrical motor driven, 18m³*0.8Mpa
Anchor Windlass : 1 set, Electric type, suitable for anchor chain of 38mm of dia. Grade 2;
Combined with winch with pull of 5t @ 12m/min at first layer.
Fixed Fire-fighting: Sea water fire-fighting system for whole ship
Deck foam system for cargo area
CO2 & Local mist spray fire-fighting system for Engine Room



JANTLE MARINE

www.jantlemarine.com

3500DWT Self Propelled Oil Barge

