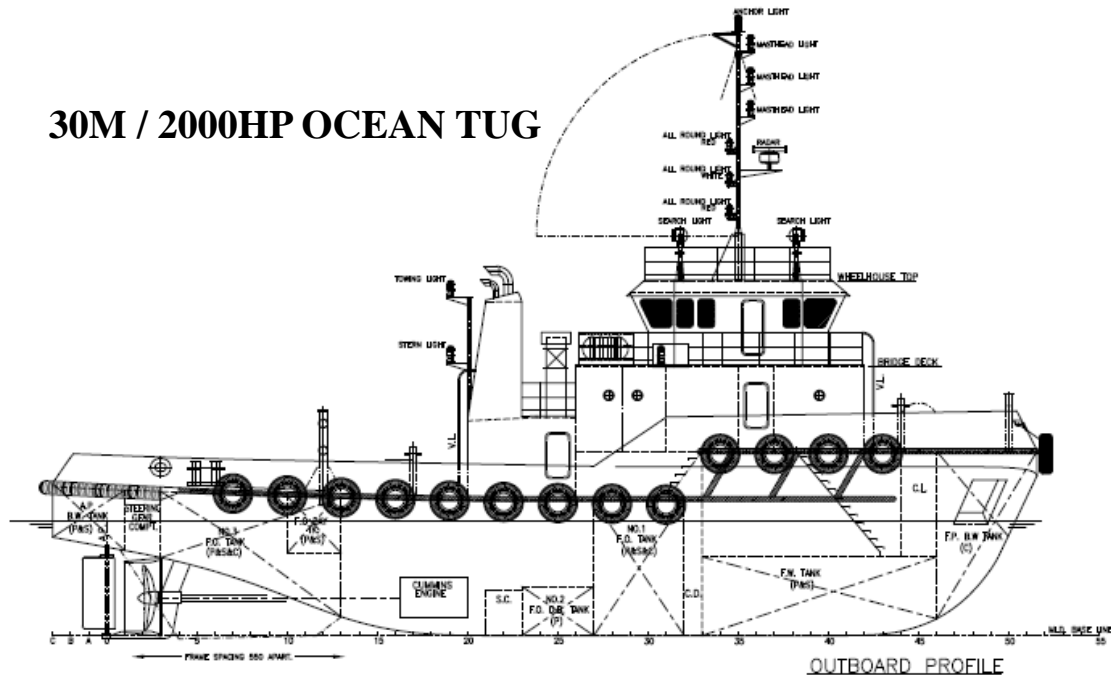




JANTLE MARINE

www.jantlemarine.com

30M / 2000HP OCEAN TUG



General Description

The vessel is to be all welded steel construction with twin diesel engines, twin fixed pitch propellers with kort nozzle for towing, pushing offshore supply and other related duties. It will be classed to BV for towing services of unrestricted navigation.

Principal Particulars

Length overall : 30.00M
Beam moulded : 8.60M
Depth moulded : 4.115M
Draft designed : 3.50M

Capacity

Fresh water : 60M3
Fuel oil : 180T
Complement : 12 men

Performance

Speed : Free running – approx 11.0 knots
Bollard pull (ahead) : Static bollard pull (ahead) – approx. 26 tonnes

Class Notation

BV I +Hull, +Mach, Circle E, Towing service for unrestricted service

Registry

Indonesia

Main Equipments

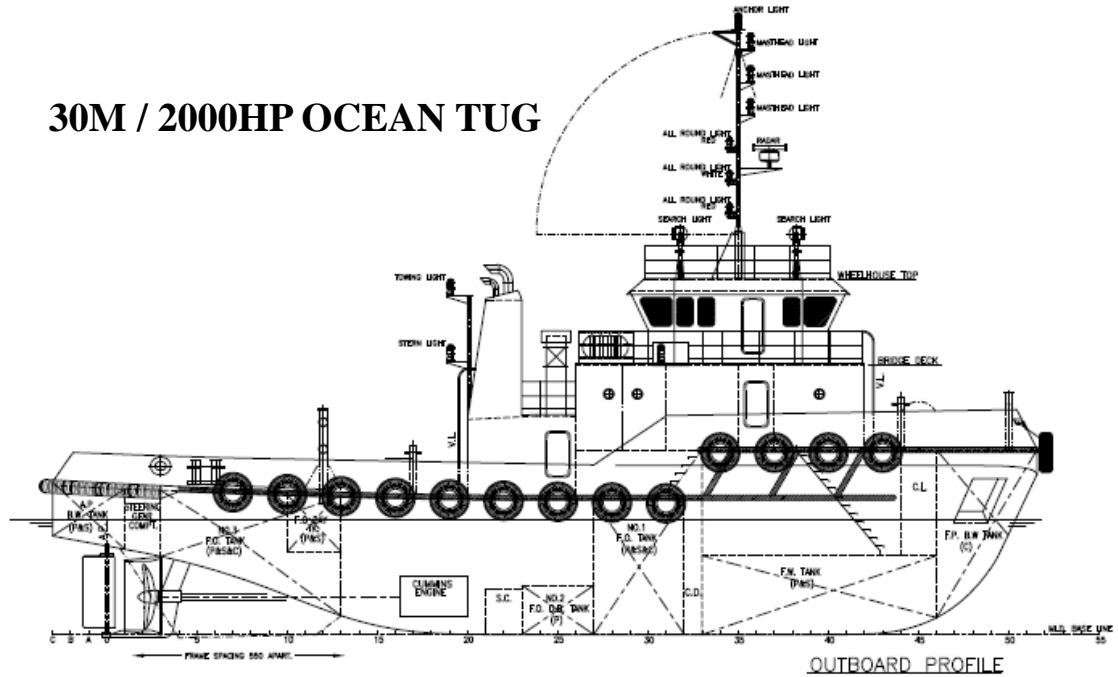
Main Engine: 2sets, CAT C32, 1000hp, 1800rpm
Gearbox: 2sets, NGC, reduction ratio: 6.04:1
Generator Set: 2sets, 84kW, AC380~400V*3*50Hz
Towing Winch: 1set, Electro-hydraulic type, 30t durm pull, 100t brake holding power
Towing Hook: 1set, 30t, quick mechanical release, 1set
Anchor Windlass: 1set, Electro-hydraulic type, for anchor chain of 19mm of dia. Grade 2
Steering Gear: 1set, Electro-hydraulic type, 25kN.m, 1set



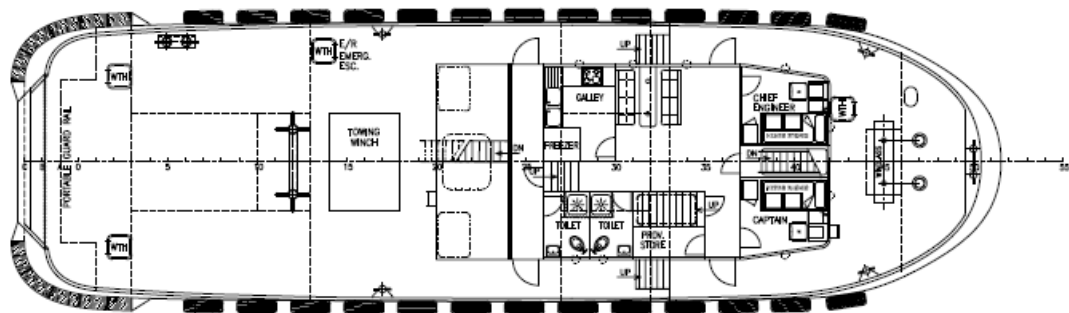
JANTLE MARINE

www.jantlemarine.com

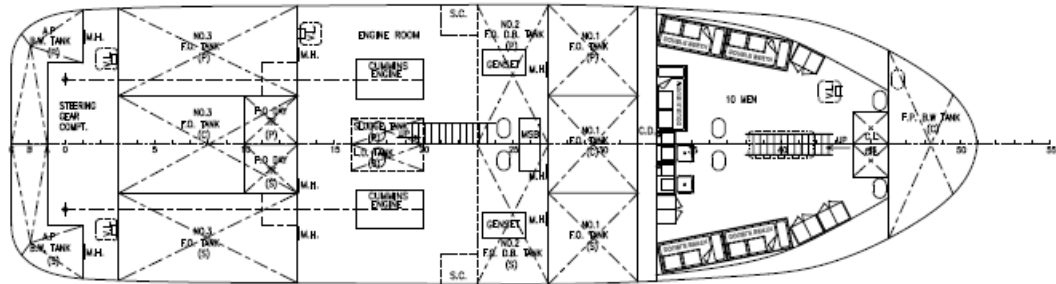
30M / 2000HP OCEAN TUG



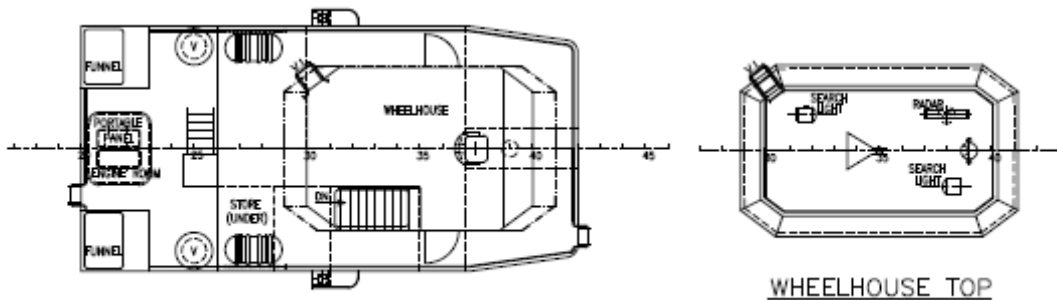
OUTBOARD PROFILE



MAIN DECK PLAN



BELOW DECK PLAN



WHEELHOUSE TOP

BRIDGE DECK PLAN