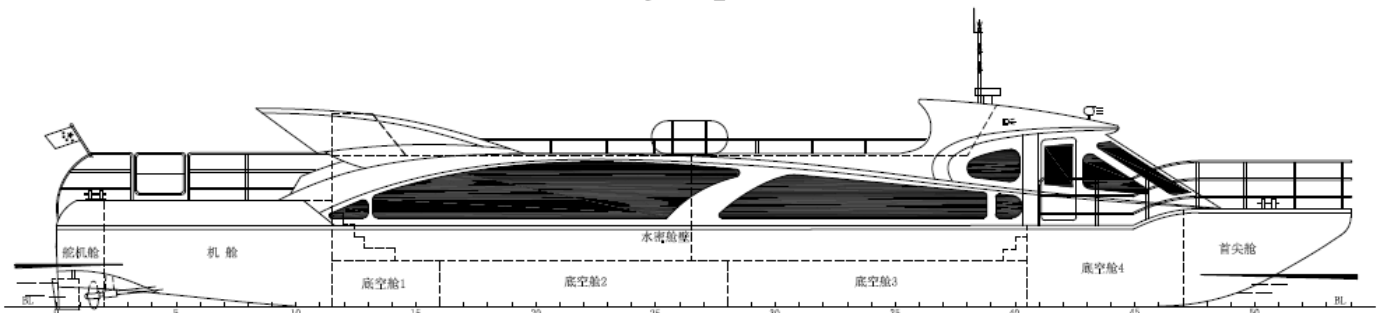


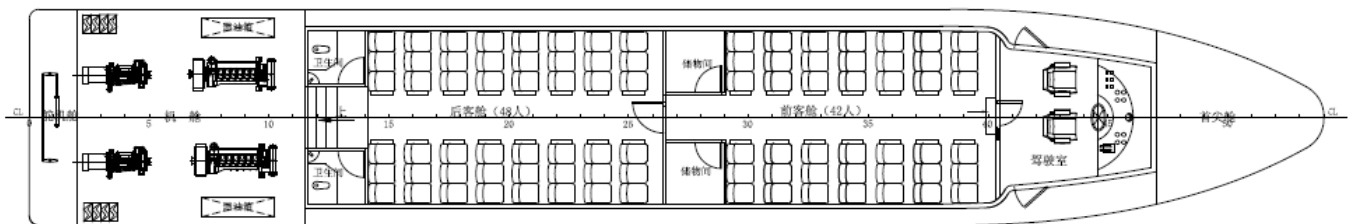


JANTLE MARINE
www.jantlemarine.com

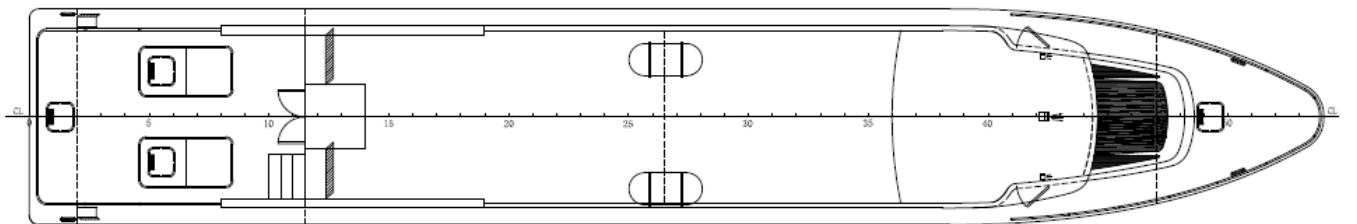
27m VIP 70P High Speed Boat in FRP



舱室平面图



主甲板及顶棚平面图



General Description

The vessel is to be all FRP construction with twin diesel engines, twin FPP propellers.

Principal Particulars

Length overall	:	27.00M
Beam moulded	:	4.50M
Depth moulded	:	1.68M
Draft designed	:	0.75M
Passengers	:	70P

Performance

Speed	:	15 knots
Service Area	:	Coastal

Registry: Coate d'Ivoire

Main equipments

Main engine/FPP + Gearbox:	2 sets, Cummins NT855-M, 270hp / 1800rpm + 120C
Main generator :	1 set, CCFJ30J, 30kW, 1500rpm, AC400V × 3 × 50Hz