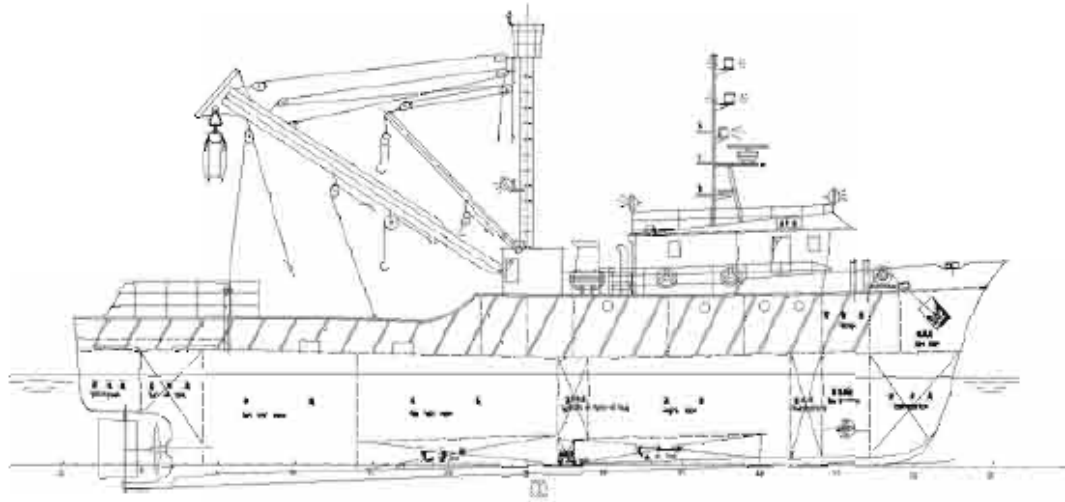




The information of Purse Seine Vessel (Loa:30m)



General Description:

This vessel is designed for fishing with purse seine in the South Atlantic Ocean. The vessel will be fishing shallow species such as pilchard, mackerel and other kinds of species. The catch will be stored in refrigerated storage tanks. The vessel is to be constructed for fishing with purse seine which will be designed and built for world wide service according to the specification and requirements of the owners.

Principal Particulars:

Hull and superstructure: Steel CSA

Overall length	30.00m	Full load displacement:	340.00 tons
Breadth moulded	7.60m	Navigation zone:	Unrestricted navigation areas
Depth moulded	3.50m	Endurance:	35days
Design draft	2.90m	Fresh water:	33.00m ³
Speed	9.70kn (85%MCR)	Fuel oil tank:	79.66m ³ .
Crews:	16 persons		

Freezing capacity

Sea water refrigerating tank:	140.00m ³	(The sea water temperature is -3°)
Freezing capacity:	100,000Kcal/h(116.7kW)	Compressor: HSK5343-30*2sets (BIZTER)

Working boat

L=4.00 m; B=1.20m; Engine (YANMAR 4JHYE) power: 35hp; Passenger: 4 persons

Boat davit:	500kg*3m
Classification Society Notation:	★CSA R1 FISHING VESSEL
Flag:	Angola

Main engine

Maker: MTU (German) Type: 6062HK38/39 Power: 354KW

Gearbox:

Maker: ZF (German) Type: MG-516DC Rations=6.00

Generator:

Maker: MTU (German) Type: 6RO99*2sets Rating power: 64kW*2sets

Ice making capacity: One ton/hour Bowthruster: 33KW; Power: 5kN