



318P High Speed Passenger Boat



Main Particulars

Hull materials: Aluminum Alloy

Classification Society: CCS

Date of Construction: May of 1993

L.O.A: 39.90 m

Breadth Molded: 12.9 m

Depth Molded: 3.8 m

Full load draft: 1.35 m

Air draft: 11.25 m

Displacement: 173 T

G.T: 560.00 T

N.T: 184.00 T

Model of Main Engine: MTU 16V396TE74L@1920KW * 2 SETs

Mode of Gear Box: ZF BU755 * 2 SETS, 2.333:1

Propulsion mode: by water jet * 2 sets, KAMEWA

Model & QTY of Generating sets: MTU 6V183AA51 * 2 SETs, 108KW

Speed: 31 Knots

NO. of Passengers: 318 Seats

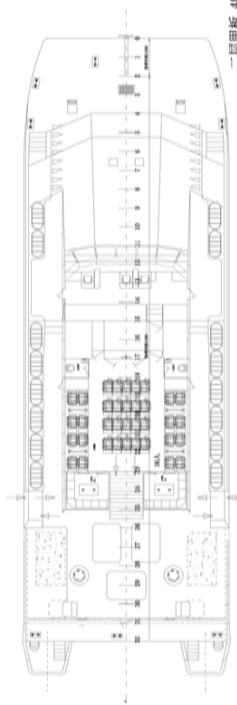
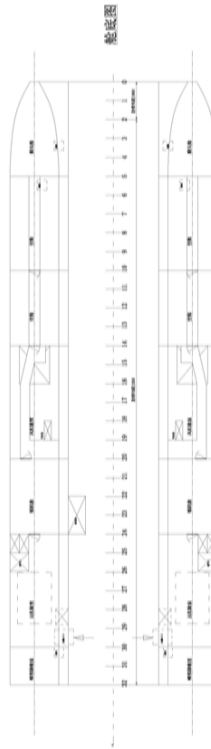
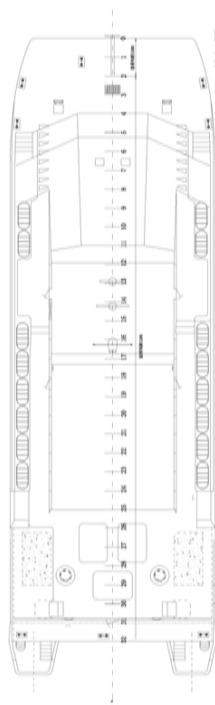
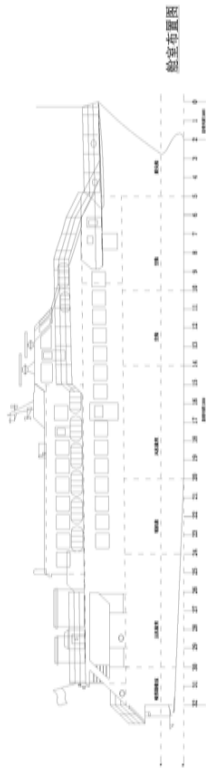
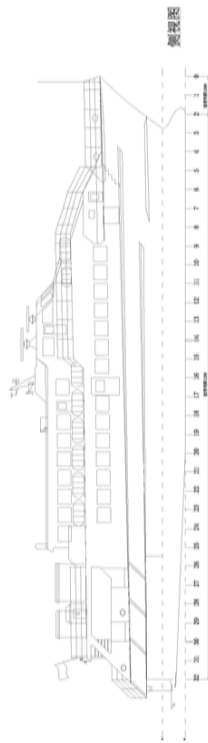
Crew: 12 P



总布置图

主要参数:

船体总长	38.0 m
总长 (包括响尾装置)	39.9 m
水线长	35.0 m
总宽	12.9 m
型深	3.80 m
设计吃水	1.45 m
乘客	318人
船员	12人



总布置图

标记	处数	分区	更改文件号	签名	年、月、日
设计					
校对					
审核					
批准					

阶段标记

重量

比例

图号: 01

共 页 第 页





	Total Running Hours (Hr)	Running Hour After Overhaul (Hr)
Main Engine (Port)	69927	2306
Main Engine (Stbd)	69933	2307
Water Jet (Port)	59428	4591
Water Jet (Stbd)	59443	4591
Generator (Port)	64621	4532
Generator (Stbd)	68224	4530
Gear Box (Port)	69927	16807
Gear Box (Stbd)	69933	16808