

## 354P High Speed Passenger Boat



### Main Particulars

Hull materials: Aluminum Alloy

Classification Society: CCS

Date of Construction: FEB of 1993

L.O.A: 39.90 m

Breadth Molded: 11.5 m

Depth Molded: 3.8 m

Full load draft: 1.23 m

G.T: 518.00 T

N.T: 173.00 T

Model of Main Engine: MTU 16V396TE74L@1915KW \* 2 SETs

Propulsion mode: by waterjet \* 2 sets, KAMEWA

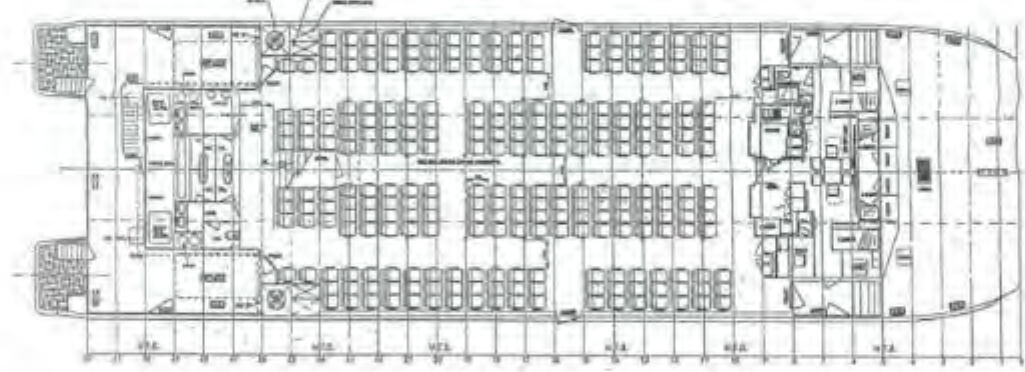
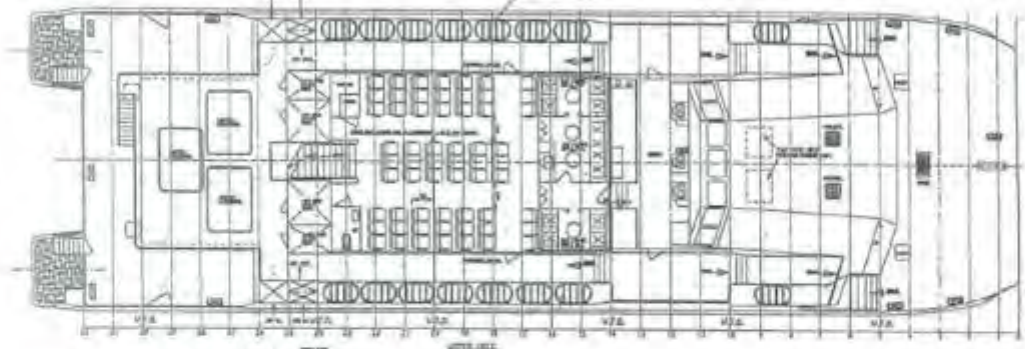
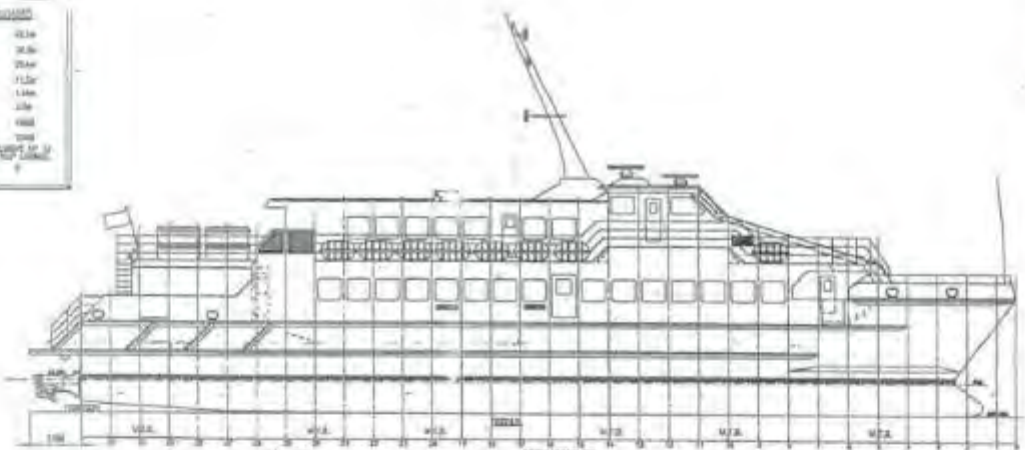
Model & QTY of Generating sets: MTU 8V183AA51 \* 2 SETs, 110KW

Speed: 31 Knots

NO. of Passengers: 354 Seats

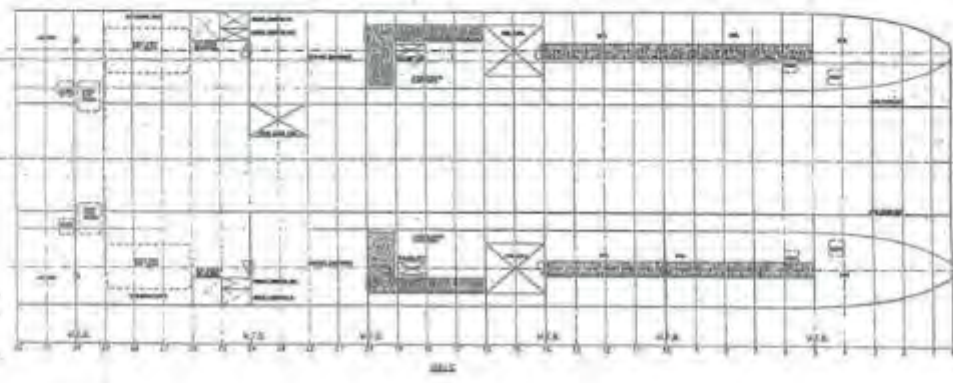


Technical Specifications	
Overall Length (mm)	48.50
Length Overall (m)	48.5
Length Waterline (m)	38.5
Beam (mm)	7.50
Beam (m)	7.5
Depth (mm)	1.50
Depth (m)	1.5
Displacement (t)	150
Speed (knots)	10
Power (kW)	150



01-01-01

总布置图



DESIGN APPROVAL	
DESIGNER	DATE
CHECKER	DATE
APPROVER	DATE
REVISION	REASON
1	
2	
3	
4	
5	
6	
7	
8	











	Running Hours (hr)	Running Hour After Overhaul (hr)
Main Engine (Port)	45173	7846
Main Engine (Stbd)	15351	7846
Generator (Port)	56811	4707
Generator (Stbd)	54509	7918