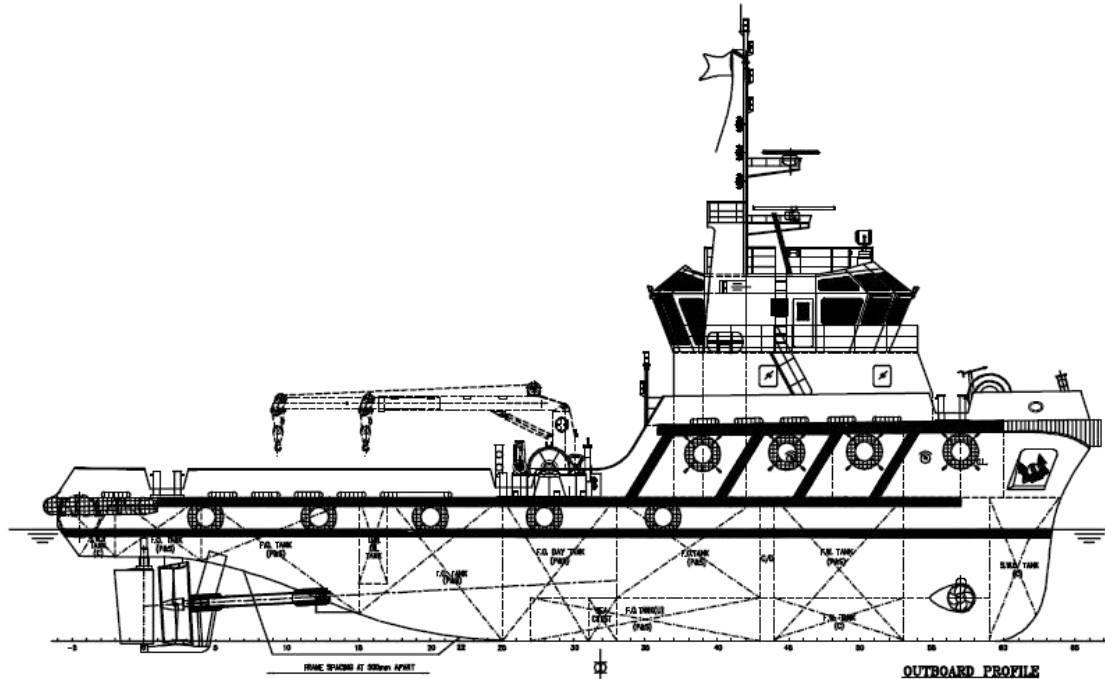




# JANTLE MARINE

www.jantlemarine.com



## General Description

The vessel is to be all welded steel construction with twin diesel engines, twin FP propellers. The vessel is registered as unrestricted service with duties of Transportation of deck cargo, personnel and consumables – F.W. & F.O. & bulk cement & liquid mud & drill water & brine & general materials & equipments etc to offshore from shore base, External fire-fighting, Rescue, Offshore platform towing / pushing, Anchor handling and Spilled oil recovery.

## Principal Particulars

Length overall	:	36.00M
Length water line	:	33.64M
Beam moulded	:	10.80M
Depth moulded	:	5.00M
Draft designed	:	4.00M
Complement	:	16 men

## Performance

Bollard pull : about 40 tonnes

## Class Notation

BV class 1, Hull, Mach, Tug, Unstricted Navigation

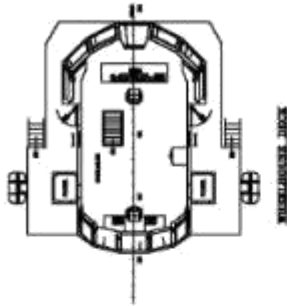
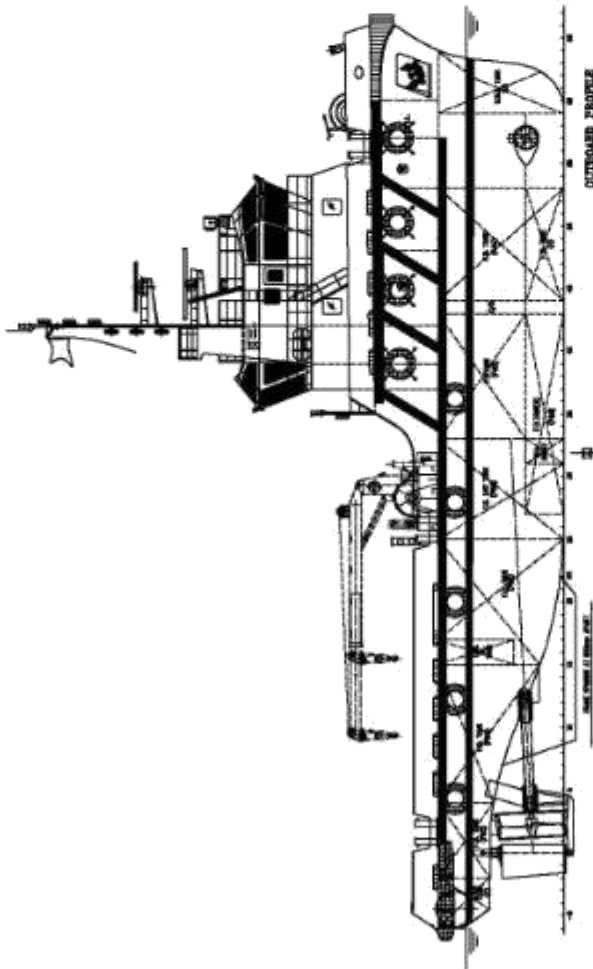
## Main equipments

Main engine/FPP:	2 sets, Caterpillar, M/E: 3512B, 1500bhp@1600rpm
Gear Box:	2 sets, ZF W 4610, 5.04:1
Bow Thrusters:	1 set, Jiangsu Marine, 130kw electric motor drive
Main generator :	2 sets, Cummins 6CT8.3-D(M) Tier 2, 150kW, 415V, 50Hz
Fi-Fi fire-fighting:	2 sets, 36m <sup>3</sup> /h×30m, 25m <sup>3</sup> /h×35m
Towing Winch:	1 set, Double Split Drum, SWL 40Ton

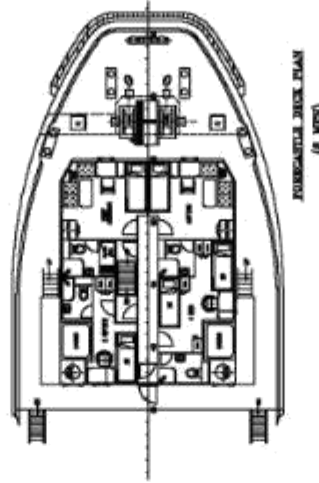


# JANTLE MARINE

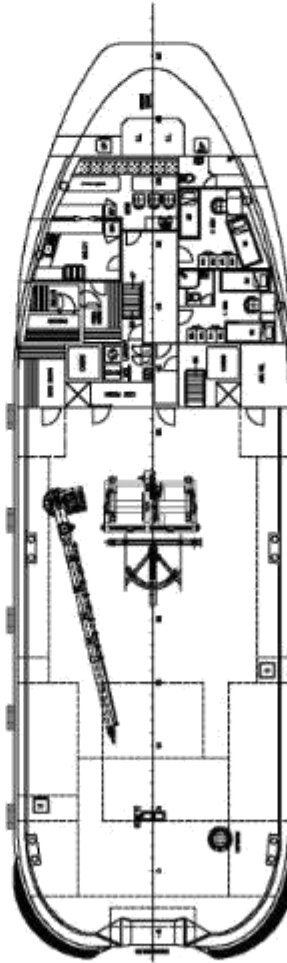
www.jantlemarine.com



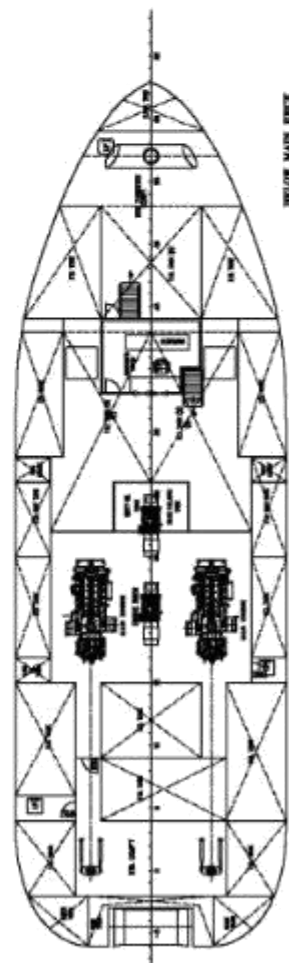
REAR DECK PLAN



FORECASTLE DECK PLAN  
(8 MEN)



MAIN DECK PLAN  
(8 MEN)



REAR DECK PLAN

### PRINCIPAL DIMENSIONS

- LENGTH OVERALL 36.00 M
- LENGTH WATERLINE 32.94 M
- BREADTH MOULDED 10.90 M
- DEPTH MOULDED 6.00 M
- EXTENSIVE DRAFT MOULDED 4.00 M
- COMPLEMENT 16 PERSONS
- ENGINE POWER 2 X 14000PS

CLASS NOTATION :  
BY Class 1 = Bulk + Mech Tag Unrestricted Navigation

DESIGNED BY	JANTLE MARINE
APPROVED BY	JANTLE MARINE
DATE	2023.10.27
SCALE	1:100
GENERAL ARRANGEMENT	
1 OF 2	



***JANTLE MARINE***

[www.jantlemarine.com](http://www.jantlemarine.com)

---

