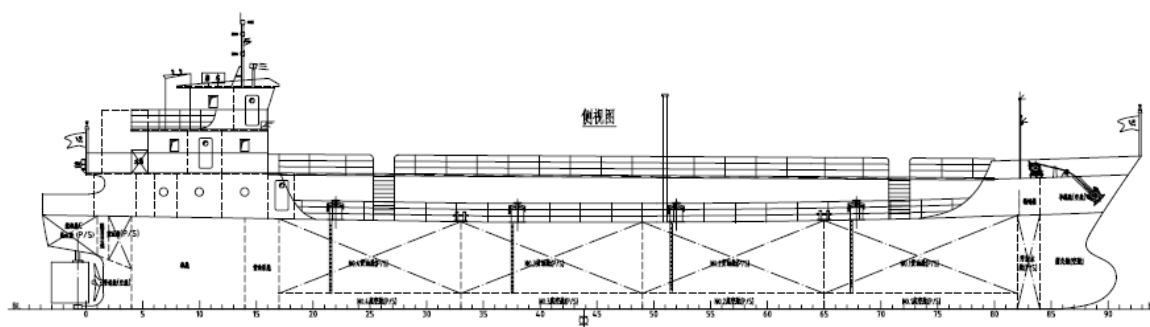




ANHUI JANTLE MARINE ENGINEERING CO., LTD

安徽杰涛船舶工程有限公司

FOR THE SUPPLY OF: 1000DWT Oil Tanker



Specification for 1000DWT Oil Tanker

Principal Particulars 主尺度

Length o.a 主体长:53.20m

Length w.l 设计水线间长:50.55m

Breadth Moulded 型宽:9.20m

Depth Moulded 型深:4.20m

Draft Design 设计吃水:3.60m

Dead Weight 载重吨: 1000DWT

Service Speed 航速:8.9kn

Flash point : $\geq 60^{\circ}$

Navigation Area 航区: A1+A2

Class Notation: ZC

Main Equipments 主设备

1. Main Engine:

218kw @ 1000rpm 6190ZLC1-2

Maker: Jinan China

2. Gearbox & Coupling:

HCD600A, 5:1

Maker: Hangzhou Advance

3. Generator Sets:

1*83kW, AC400V, 50Hz/S6135CZ

Maker: Zibo China

Harbour Generator:

1 * 39kW, AC400V, 50Hz /ZH4100D

Maker: Zibo China

4. Sewage Treatment Plant

Capacity: 15P

Maker: Jiangsu Dongtai

5. Bilge water oil separator

Capacity: 0.5 m³/h*0.3MPa

Maker: Shanghai Zhiming

6. Pump System

1*220 m³/h Cargo Pump

1*50 m³/h Fire Fighting Pump

1*43 m³/h Bilge General Pump

1*5 m³/h daily fuel oil Pump

1*bilge ejection pump, 1*stern tube lub.oil hand pump, 1*steering gear room hand pump

Maker: Zhejiang Donghang Pump

7.CO2 Fire-Fighting System

Pneumatic and manual Releasing

7 bottles with 68L/b

Maker: Wuhan Xiandai Changjiang

8.Steering Gear

1 * 30kN.m Electro-hydraulic ram type

Maker: Jiangsu Xinghua Yuanyang Machinery

9. Anchor & mooring system

2 * AM3-30mm Electro-hydraulic

Maker: Jiangsu Huaiyin

Build year: Jan.2010

Year of reconstruction: May.2016