

General Description

The vessel is designed for assisting large seagoing vessels in harbours and coastal waters, and is also fitted out for offshore towage and fire-fighting operations.

The vessel is of all steel construction with a single main working deck aft and a single tier deckhouse forward. The main machinery space is located amidships and potable water and fuel tanks are arranged as shown on the General Arrangement plan.

A split drum, hydraulic combined winch and windlass is installed on the Main Deck forward. One towing hook is installed on the Main Deck aft.

The vessel is powered by an azimuth stern drive propulsion system consisting of two main diesel engines connected to drive shafts and Z-drive propulsion units with fixed pitch propellers in high efficiency nozzles.

Principal Particulars

Length overall	: 24.20 m	Fuel Oil	: 40 m3
Length water line	: 23.65 m	Potable Water	: 22 m3
Beam moulded	: 9.00 m	Water Ballast	: 9.0 m3
Depth moulded	: 3.80 m	Grey Water	: 4.5 m3
Draft designed	: 2.40 m	Black Water	: 4.5 m3
Maximum draft	: 2.60 m	Foam	: 3.0 m3
Complement	: 10 men	Dispersant	: 2.7 m3
Speed	: 10 knot	Lubricating Oil	: 3.0 m3
G.T	: 198 ton	Oily Water	: 2.5 m3
Class	: BV	Dirty Oil (Sludge)	: 1.5 m3

Performance

Bollard pull : about 20 tonnes

Class Notation

BV class I, +HULL, +MACH, Tug, fire-fighting ship E, Coastal Area, INWATERSURVEY

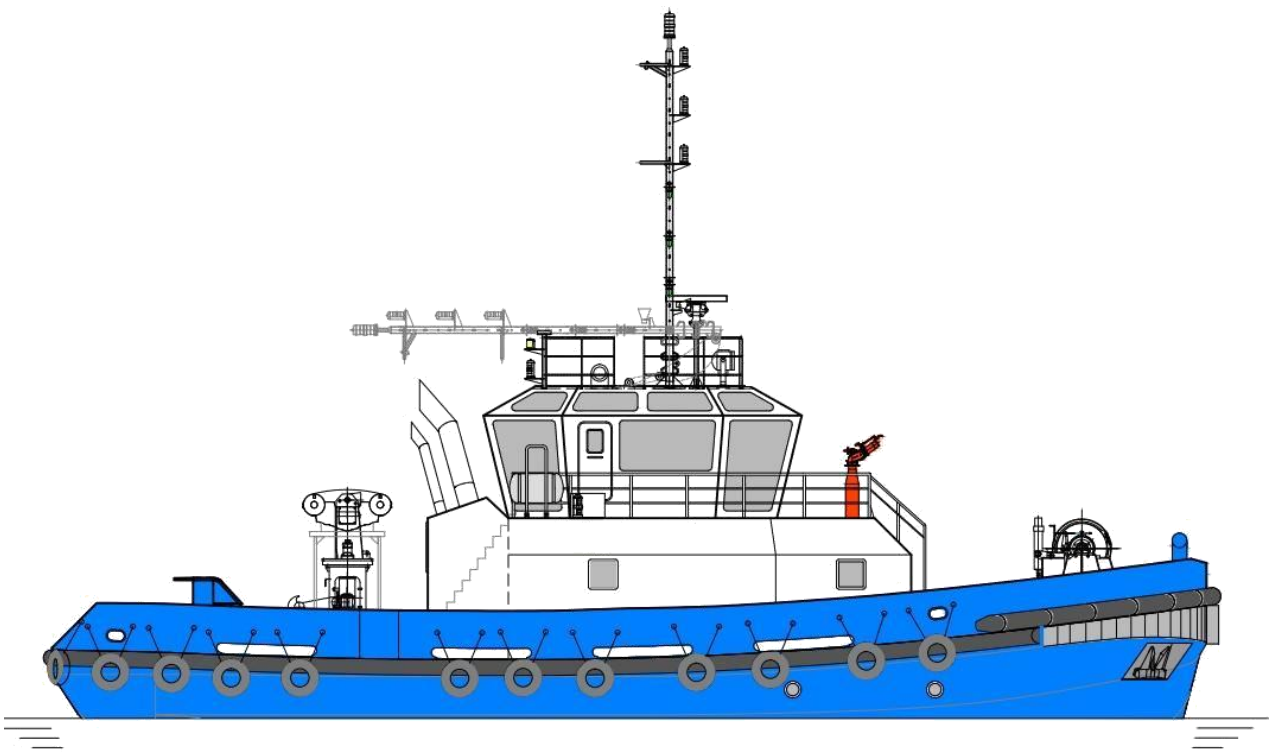


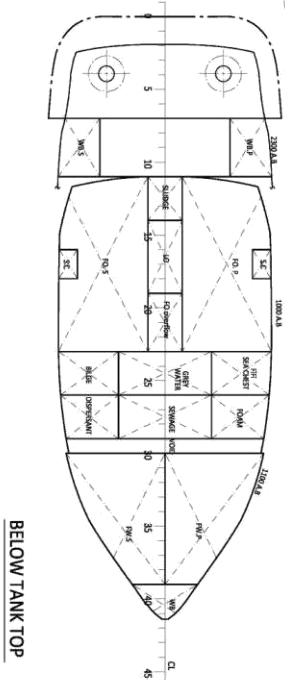
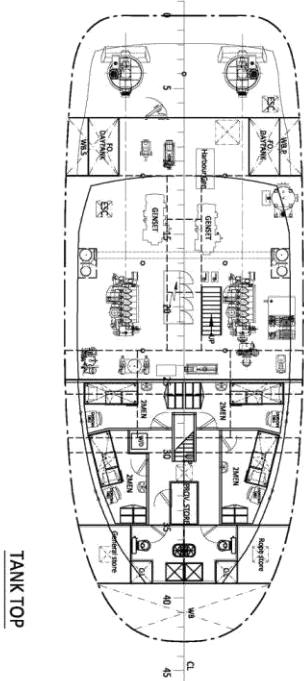
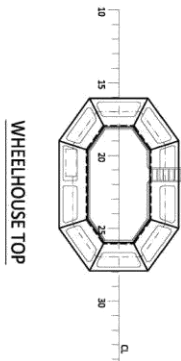
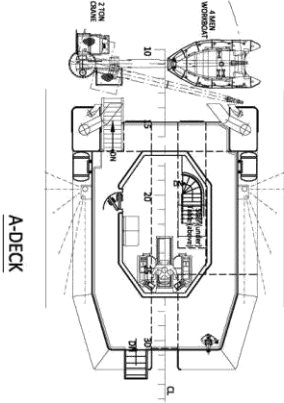
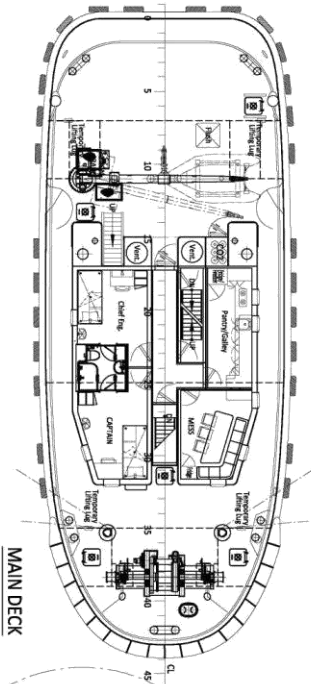
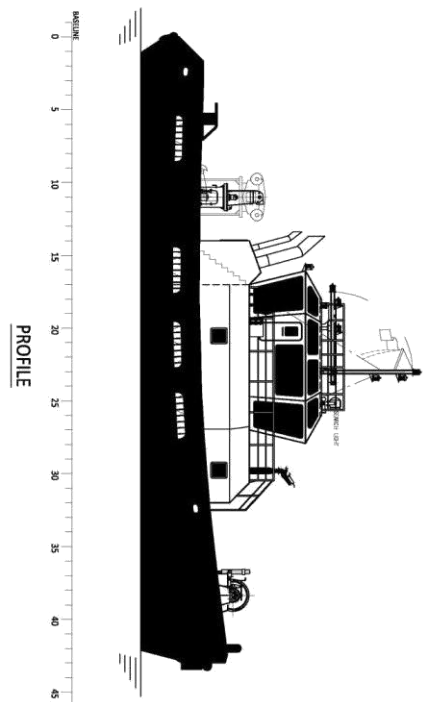
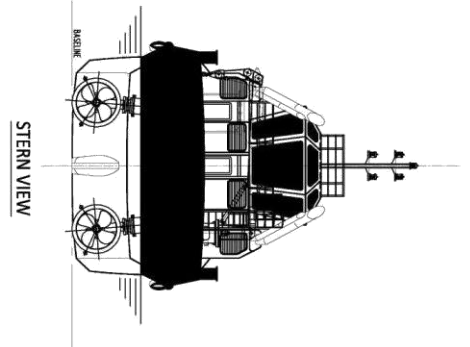
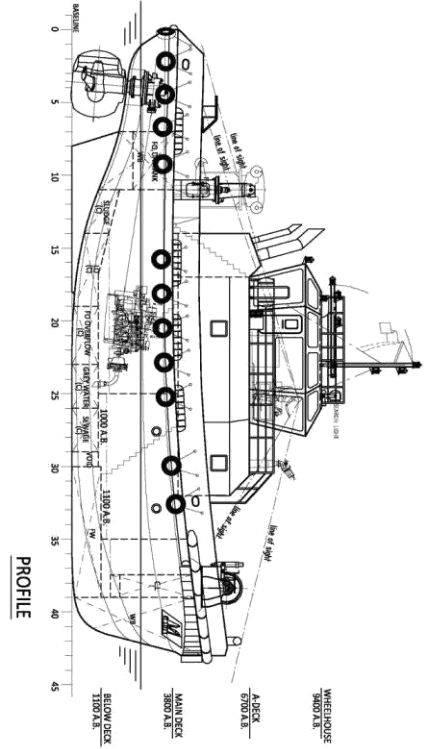
JANTLE MARINE

www.jantlemarine.com

Main equipments

Main engine:	2 sets, Yanmar 6EY17W, 749kW @ 1400 rpm, Tier II
Azimuth thrusters:	2 sets, Rolls Royce US105P9FP, 4 blades fixed pitch propeller
Main generator:	2 sets, Volvo D5A-TA HE, 86 kW @ 1500 rpm
Alternator:	2 sets, Stamford UCM274E1, 415 V - 3phase / 50 Hz
Harbour generator set:	1 set, Perkins 4.4GM, 24 kW @ 1,500 rpm
Alternator:	1 set, Stamford UCM224D1, 415 V - 3phase / 50 Hz
Fire-fighting pump:	1 set, main engine PTO driven pump, 600m ³ /hr sea water at 120mlc
Deck Crane:	1 set, Oceanic Marine Services HCHC120020L or similar, 2T @ 6m
Liferaft:	2sets, 10 persons
Lifeboat:	1 set, 4 persons
Lifebuoy:	8 sets
Lifejacket:	13 sets
EEBD:	4 sets
Radar:	1 set
GPS:	1 set
Echo sounder:	1 set
AIS:	1 set
Navtex Receiver:	1 set
VHF radio with DSC terminals:	1 set
VHF Radios:	2 sets
MF/HF:	1 set
EPIRB:	1 set
SART:	1 set
GMDSS:	2 sets, portable 2-way VHF radios





MAIN PARTICULARS

LENGTH oa.	24.20 m
LENGTH hull	23.65 m
BREADTH mid.	9.00 m
DEPTH mid.	3.80 m
DRAFT design	2.60 m
Working Draft	2.40 m
BOLLARD PULL	In excess of 20 TON
PROPUSSION	2x750 KW
SPEED	10 KNOTS
FO CAPACITY	40 m ³ (Approx.)
PW CAPACITY	22 m ³ (Approx.)
ACCOMMODATION	10 POB
GRT	BELOW 200

CLASSIFICATION:

BV: 1, 23 HULL 25 MACH, Tug, Fire-fighting ship E, Coastal Service, INWATERSURVEY

FOR APPROVAL

REV	MODIFICATION	DATE	BY
5	GENERAL UPDATED	13-03-2017	BI
4	GENERAL UPDATED	07-03-2017	BI
3	GENERAL UPDATED	21-02-2017	RZ
2	GENERAL UPDATED	03-02-2017	BI
1	GENERAL UPDATED	23-01-2017	BI
0	INITIAL ISSUE FOR CONTRACT	17-01-2017	BI

PROJECT	AZISTERN 24/20 SHALLOW DRAFT TUG
TITLE	GENERAL ARRANGEMENT (FINAL)
SCALE	1:100
NO. OF SHEETS	1 OF 1