

General Description

The vessel is to be all welded steel construction with twin diesel engines, twin FP propellers. The vessel is registered as unrestricted service with duties of Transportation of deck cargo, personnel and consumables – F.W. & F.O. & bulk cement & liquid mud & drill water & brine & general materials & equipments etc to offshore from shore base, External fire-fighting, Rescue, Offshore platform towing / pushing, Anchor handling and Spilled oil recovery.

Principal Particulars

| | | | |
|-------------------|----------|----------------------|-----------|
| Length overall | : 39.00M | Fuel oil capacity | : 350 m3 |
| Length water line | : 36.14M | Fresh water capacity | : 100 m3 |
| Beam moulded | : 10.80M | G.T(ESTD) | : 499 Ton |
| Depth moulded | : 5.00M | Deck Area | : 130 m2 |
| Draft designed | : 4.00M | | |
| Complement | : 14 men | | |

Performance

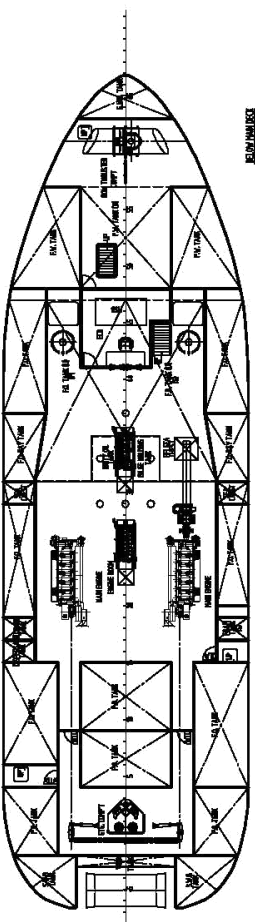
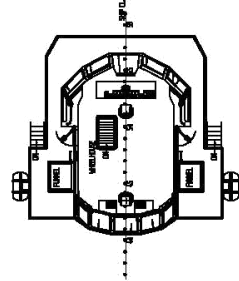
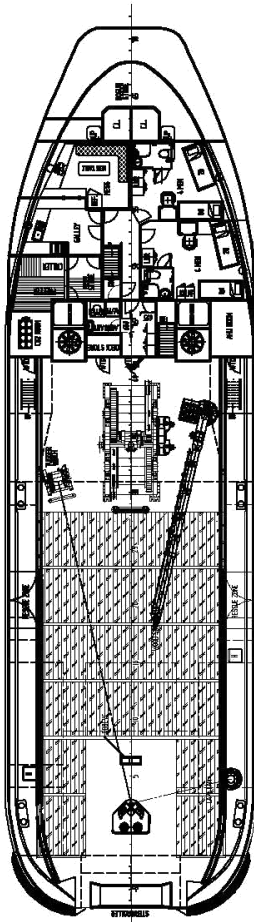
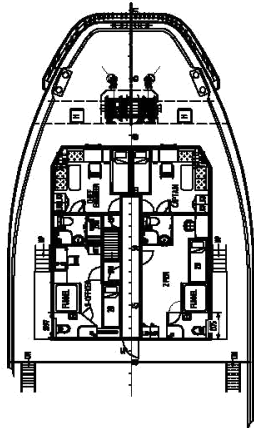
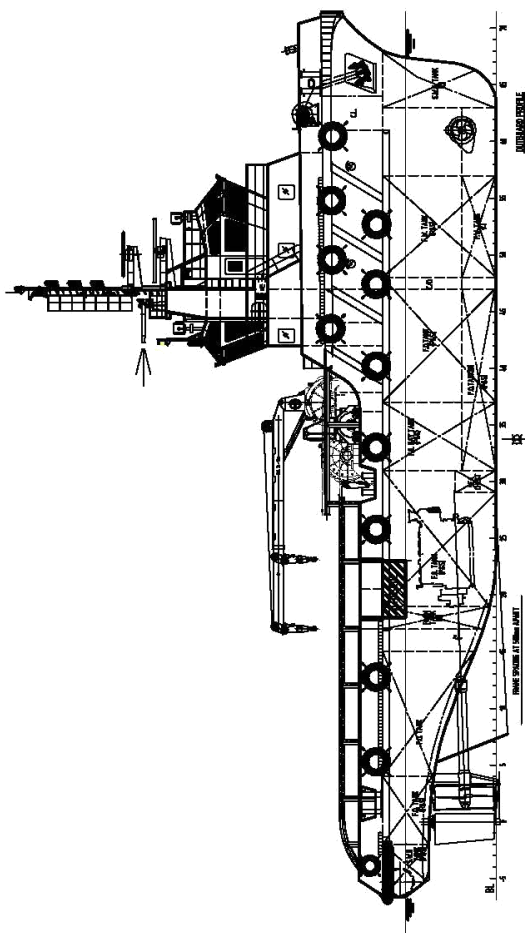
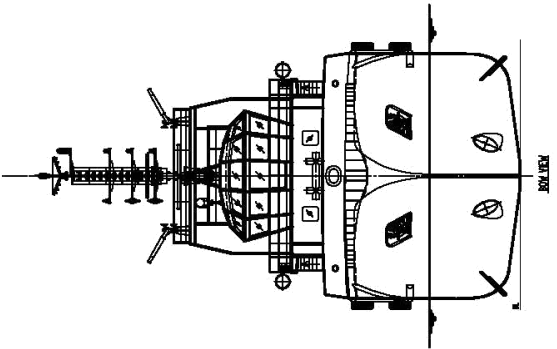
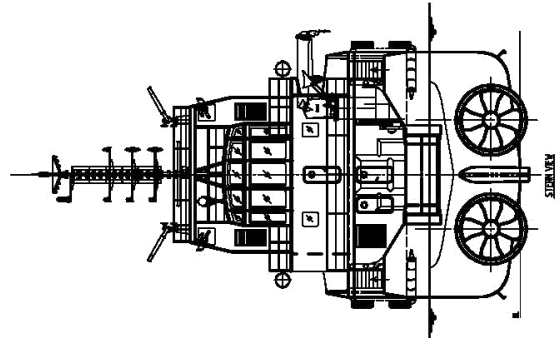
| | |
|---------------------|-------------------|
| Trial Speed | : 12.5 knot |
| Bollard pull(Ahead) | : about 60 tonnes |

Class Notation

BV class 1, Hull, Mach, Tug, Unstricted Navigation

Main equipments

| | |
|----------------------|---|
| Main engine/FPP: | 2 sets, Niigata, M/E: 6MG28HX, 2250bhp@750rpm |
| Gear Box: | 2 sets, Hitachi-Nico, MGN5023Z, 3.15:1 |
| Bow Thrusters: | 1 set, Jiangsu Marine, TT900-FP, 150kw electric motor drive |
| Main generator : | 2 sets, Cummins QSM11-D(M), 245kW, 415V, 50Hz |
| Fi-Fi fire-fighting: | 2 sets, 35m ³ /h×30m, 25m ³ /h×35m |
| Towing Winch: | 1 set, Double Split Drum, SWL 60Ton |



PRINCIPAL DIMENSIONS

LENGTH OVERALL 39.00 M
 LENGTH WATERLINE 36.14 M
 BREADTH MOULDED 10.80 M
 DEPTH MOULDED 5.00 M
 KEEL TO GUNWALE 4.00 M
 KEEL TO FREE BOARD (ASSIGNMENT) 4.00 M
 CSBK 14 MEN
 FUEL OIL 500 M³
 FRESH WATER 100 M³
 TOTAL POWER 2 X 2260 BHP
 TRIAL SPEED 13.0 KNOTS
 BOLLARD PULL (AHEAD) 60.0 TONNES
 GRT (ESTD) 499
 DECK AREA 130 M²

| NO. | DESCRIPTION | UNIT | QTY | REMARKS |
|-----|---------------------------------|----------------|----------|---------|
| 1 | LENGTH OVERALL | M | 39.00 | |
| 2 | LENGTH WATERLINE | M | 36.14 | |
| 3 | BREADTH MOULDED | M | 10.80 | |
| 4 | DEPTH MOULDED | M | 5.00 | |
| 5 | KEEL TO GUNWALE | M | 4.00 | |
| 6 | KEEL TO FREE BOARD (ASSIGNMENT) | M | 4.00 | |
| 7 | CSBK | NO. | 14 | |
| 8 | FUEL OIL | M ³ | 500 | |
| 9 | FRESH WATER | M ³ | 100 | |
| 10 | TOTAL POWER | BHP | 2 X 2260 | |
| 11 | TRIAL SPEED | KNOTS | 13.0 | |
| 12 | BOLLARD PULL (AHEAD) | TONNES | 60.0 | |
| 13 | GRT (ESTD) | | 499 | |
| 14 | DECK AREA | M ² | 130 | |

| NO. | DESCRIPTION | UNIT | QTY | REMARKS |
|-----|---------------------------------|----------------|----------|---------|
| 1 | LENGTH OVERALL | M | 39.00 | |
| 2 | LENGTH WATERLINE | M | 36.14 | |
| 3 | BREADTH MOULDED | M | 10.80 | |
| 4 | DEPTH MOULDED | M | 5.00 | |
| 5 | KEEL TO GUNWALE | M | 4.00 | |
| 6 | KEEL TO FREE BOARD (ASSIGNMENT) | M | 4.00 | |
| 7 | CSBK | NO. | 14 | |
| 8 | FUEL OIL | M ³ | 500 | |
| 9 | FRESH WATER | M ³ | 100 | |
| 10 | TOTAL POWER | BHP | 2 X 2260 | |
| 11 | TRIAL SPEED | KNOTS | 13.0 | |
| 12 | BOLLARD PULL (AHEAD) | TONNES | 60.0 | |
| 13 | GRT (ESTD) | | 499 | |
| 14 | DECK AREA | M ² | 130 | |

| NO. | DESCRIPTION | UNIT | QTY | REMARKS |
|-----|---------------------------------|----------------|----------|---------|
| 1 | LENGTH OVERALL | M | 39.00 | |
| 2 | LENGTH WATERLINE | M | 36.14 | |
| 3 | BREADTH MOULDED | M | 10.80 | |
| 4 | DEPTH MOULDED | M | 5.00 | |
| 5 | KEEL TO GUNWALE | M | 4.00 | |
| 6 | KEEL TO FREE BOARD (ASSIGNMENT) | M | 4.00 | |
| 7 | CSBK | NO. | 14 | |
| 8 | FUEL OIL | M ³ | 500 | |
| 9 | FRESH WATER | M ³ | 100 | |
| 10 | TOTAL POWER | BHP | 2 X 2260 | |
| 11 | TRIAL SPEED | KNOTS | 13.0 | |
| 12 | BOLLARD PULL (AHEAD) | TONNES | 60.0 | |
| 13 | GRT (ESTD) | | 499 | |
| 14 | DECK AREA | M ² | 130 | |

| NO. | DESCRIPTION | UNIT | QTY | REMARKS |
|-----|---------------------------------|----------------|----------|---------|
| 1 | LENGTH OVERALL | M | 39.00 | |
| 2 | LENGTH WATERLINE | M | 36.14 | |
| 3 | BREADTH MOULDED | M | 10.80 | |
| 4 | DEPTH MOULDED | M | 5.00 | |
| 5 | KEEL TO GUNWALE | M | 4.00 | |
| 6 | KEEL TO FREE BOARD (ASSIGNMENT) | M | 4.00 | |
| 7 | CSBK | NO. | 14 | |
| 8 | FUEL OIL | M ³ | 500 | |
| 9 | FRESH WATER | M ³ | 100 | |
| 10 | TOTAL POWER | BHP | 2 X 2260 | |
| 11 | TRIAL SPEED | KNOTS | 13.0 | |
| 12 | BOLLARD PULL (AHEAD) | TONNES | 60.0 | |
| 13 | GRT (ESTD) | | 499 | |
| 14 | DECK AREA | M ² | 130 | |

| NO. | DESCRIPTION | UNIT | QTY | REMARKS |
|-----|---------------------------------|----------------|----------|---------|
| 1 | LENGTH OVERALL | M | 39.00 | |
| 2 | LENGTH WATERLINE | M | 36.14 | |
| 3 | BREADTH MOULDED | M | 10.80 | |
| 4 | DEPTH MOULDED | M | 5.00 | |
| 5 | KEEL TO GUNWALE | M | 4.00 | |
| 6 | KEEL TO FREE BOARD (ASSIGNMENT) | M | 4.00 | |
| 7 | CSBK | NO. | 14 | |
| 8 | FUEL OIL | M ³ | 500 | |
| 9 | FRESH WATER | M ³ | 100 | |
| 10 | TOTAL POWER | BHP | 2 X 2260 | |
| 11 | TRIAL SPEED | KNOTS | 13.0 | |
| 12 | BOLLARD PULL (AHEAD) | TONNES | 60.0 | |
| 13 | GRT (ESTD) | | 499 | |
| 14 | DECK AREA | M ² | 130 | |

| NO. | DESCRIPTION | UNIT | QTY | REMARKS |
|-----|---------------------------------|----------------|----------|---------|
| 1 | LENGTH OVERALL | M | 39.00 | |
| 2 | LENGTH WATERLINE | M | 36.14 | |
| 3 | BREADTH MOULDED | M | 10.80 | |
| 4 | DEPTH MOULDED | M | 5.00 | |
| 5 | KEEL TO GUNWALE | M | 4.00 | |
| 6 | KEEL TO FREE BOARD (ASSIGNMENT) | M | 4.00 | |
| 7 | CSBK | NO. | 14 | |
| 8 | FUEL OIL | M ³ | 500 | |
| 9 | FRESH WATER | M ³ | 100 | |
| 10 | TOTAL POWER | BHP | 2 X 2260 | |
| 11 | TRIAL SPEED | KNOTS | 13.0 | |
| 12 | BOLLARD PULL (AHEAD) | TONNES | 60.0 | |
| 13 | GRT (ESTD) | | 499 | |
| 14 | DECK AREA | M ² | 130 | |

GENERAL ARRANGEMENT

| NO. | DESCRIPTION | UNIT | QTY | REMARKS |
|-----|---------------------------------|----------------|----------|---------|
| 1 | LENGTH OVERALL | M | 39.00 | |
| 2 | LENGTH WATERLINE | M | 36.14 | |
| 3 | BREADTH MOULDED | M | 10.80 | |
| 4 | DEPTH MOULDED | M | 5.00 | |
| 5 | KEEL TO GUNWALE | M | 4.00 | |
| 6 | KEEL TO FREE BOARD (ASSIGNMENT) | M | 4.00 | |
| 7 | CSBK | NO. | 14 | |
| 8 | FUEL OIL | M ³ | 500 | |
| 9 | FRESH WATER | M ³ | 100 | |
| 10 | TOTAL POWER | BHP | 2 X 2260 | |
| 11 | TRIAL SPEED | KNOTS | 13.0 | |
| 12 | BOLLARD PULL (AHEAD) | TONNES | 60.0 | |
| 13 | GRT (ESTD) | | 499 | |
| 14 | DECK AREA | M ² | 130 | |



JANTLE MARINE

www.jantlemarine.com

