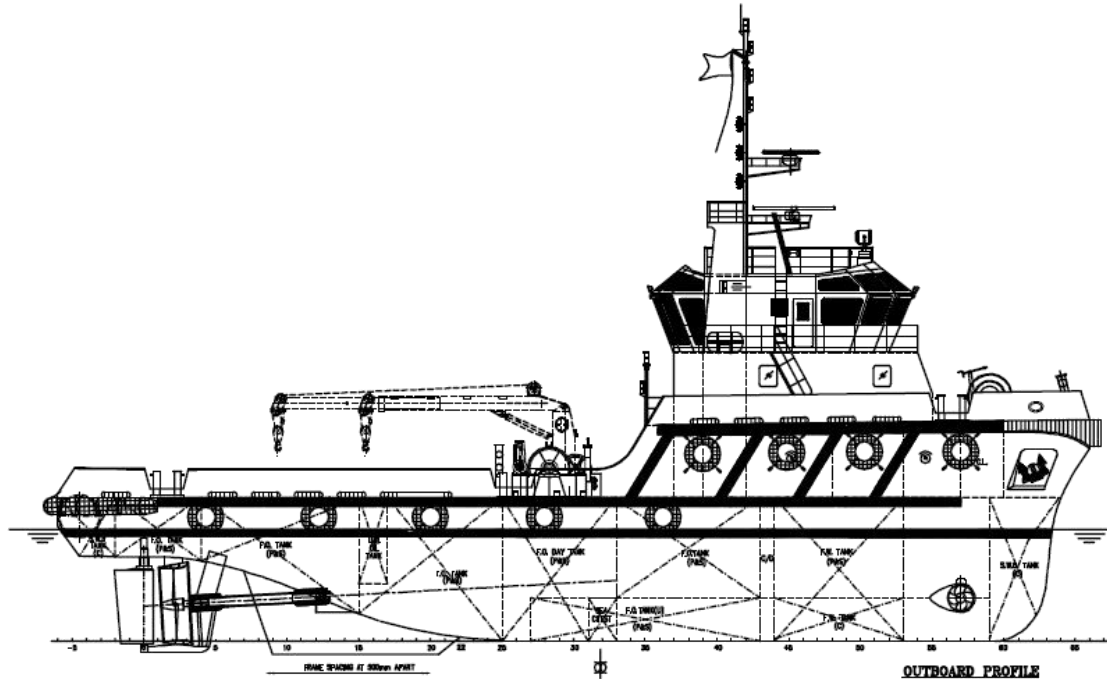




JANTLE MARINE

www.jantlemarine.com



General Description

The vessel is to be all welded steel construction with twin diesel engines, twin FP propellers. The vessel is registered as unrestricted service with duties of Transportation of deck cargo, personnel and consumables – F.W. & F.O. & bulk cement & liquid mud & drill water & brine & general materials & equipments etc to offshore from shore base, External fire-fighting, Rescue, Offshore platform towing / pushing, Anchor handing and Spilled oil recovery.

Principal Particulars

Length overall	:	36.00M
Length water line	:	33.64M
Beam moulded	:	10.80M
Depth moulded	:	5.00M
Draft designed	:	4.00M
Complement	:	16 men

Performance

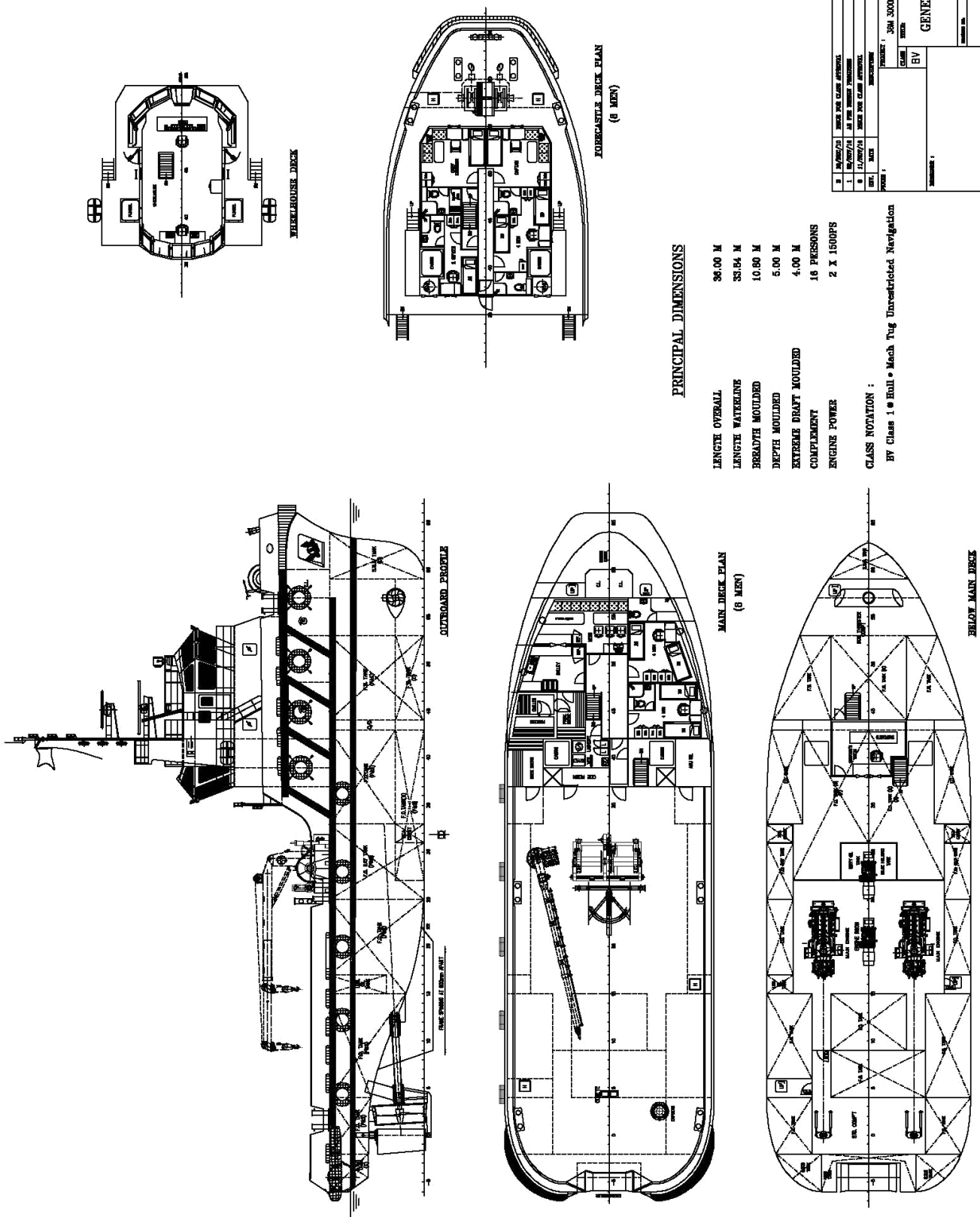
Bollard pull : about 40 tonnes

Class Notation

BV class 1, Hull, Mach, Tug, Unstricted Navigation

Main equipments

Main engine/FPP:	2 sets, Caterpillar, M/E: 3512B, 1500bhp@1600rpm
Gear Box:	2 sets, ZF W 4610, 5.04:1
Bow Thrusters:	1 set, Jiangsu Marine, 130kw electric motor drive
Main generator :	2 sets, Cummins 6CT8.3-D(M) Tier 2, 150kW, 415V, 50Hz
Fi-Fi fire-fighting:	2 sets, 36m ³ /h×30m, 25m ³ /h×35m
Towing Winch:	1 set, Double Split Drum, SWL 40Ton



PRINCIPAL DIMENSIONS

- LENGTH OVERALL 36.00 M
- LENGTH WATERLINE 33.94 M
- BREADTH MOULDED 10.80 M
- DEPTH MOULDED 5.00 M
- EXTREME DRAFT MOULDED 4.00 M
- COMPLEMENT 16 PERSONS
- ENGINE POWER 2 X 1500PS

CLASS NOTATION :
 BV Class 1 • Half • Mach • Tug • Unrestricted Navigation

1	PLAN/SECTION	DATE	BY	CHK	APPV
2	PLAN/SECTION	DATE	BY	CHK	APPV
3	PLAN/SECTION	DATE	BY	CHK	APPV
4	PLAN/SECTION	DATE	BY	CHK	APPV
5	PLAN/SECTION	DATE	BY	CHK	APPV
6	PLAN/SECTION	DATE	BY	CHK	APPV
7	PLAN/SECTION	DATE	BY	CHK	APPV
8	PLAN/SECTION	DATE	BY	CHK	APPV
9	PLAN/SECTION	DATE	BY	CHK	APPV
10	PLAN/SECTION	DATE	BY	CHK	APPV
PROJECT : 30M 3000HP OCEAN TOWAGE/UTILITY VESSEL CLASS : BV GENERAL ARRANGEMENT SHEET NO. : 1 OF 12 DATE :					



JANTLE MARINE

www.jantlemarine.com

