

JANTLE MARINE

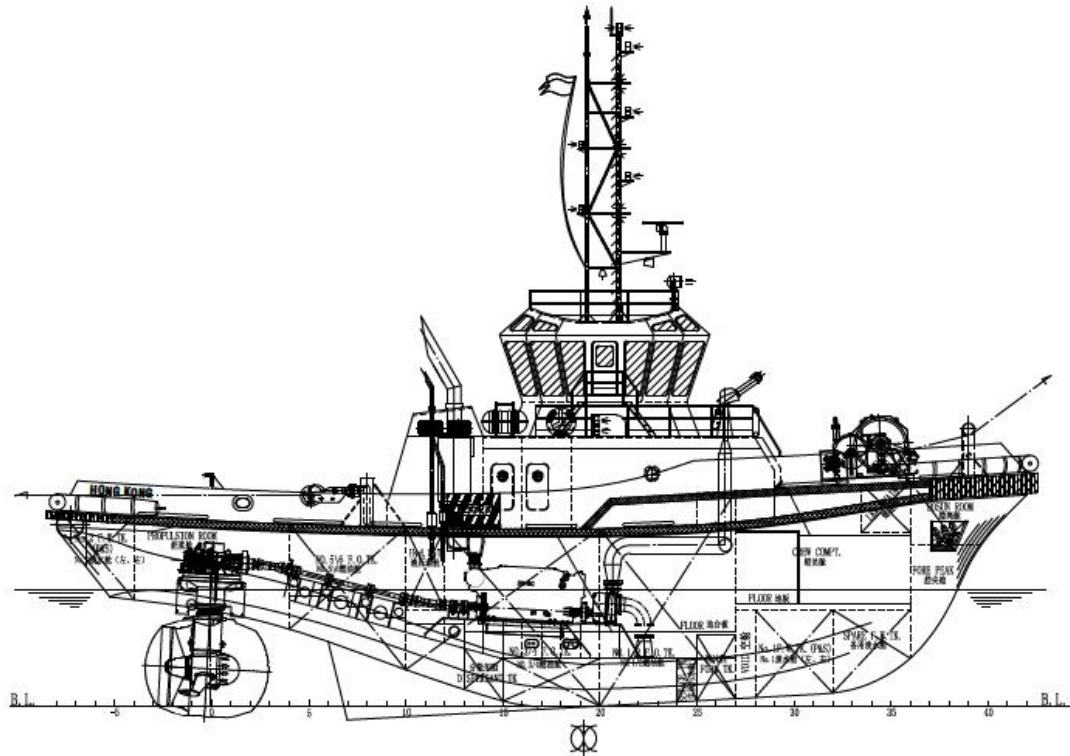
SPECIFICATION OUTLINE

5150BHP HANDYSIZE ASD TUG

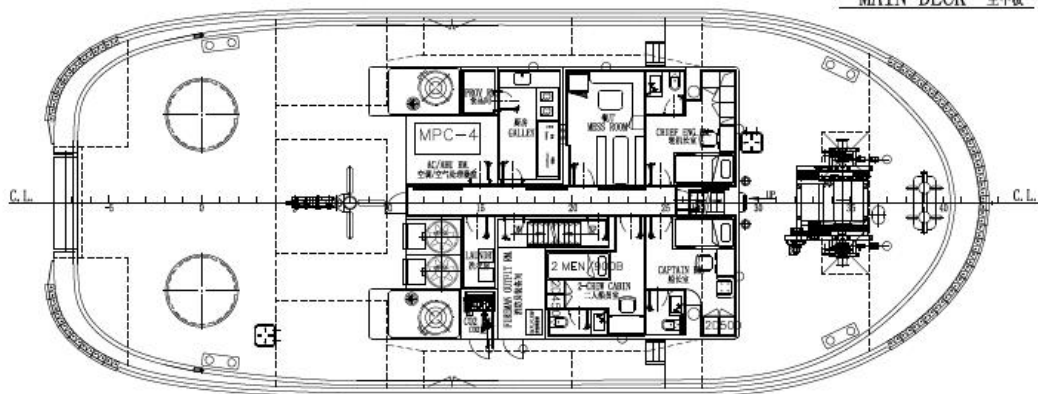


JANTLE MARINE

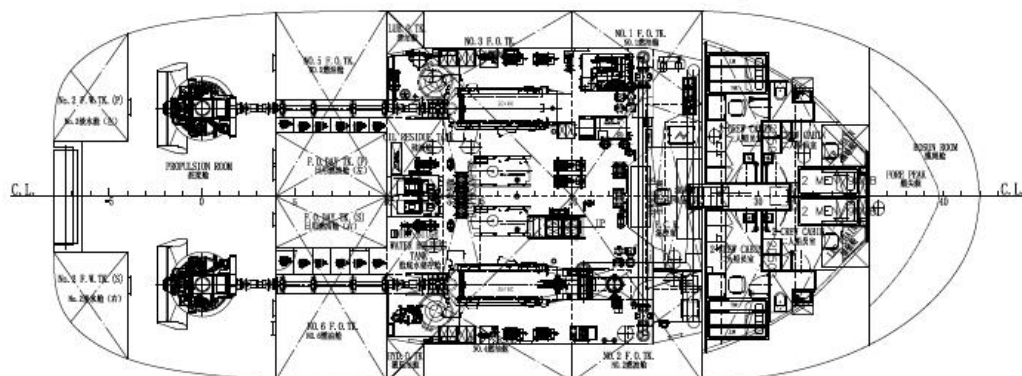
General Arrangement



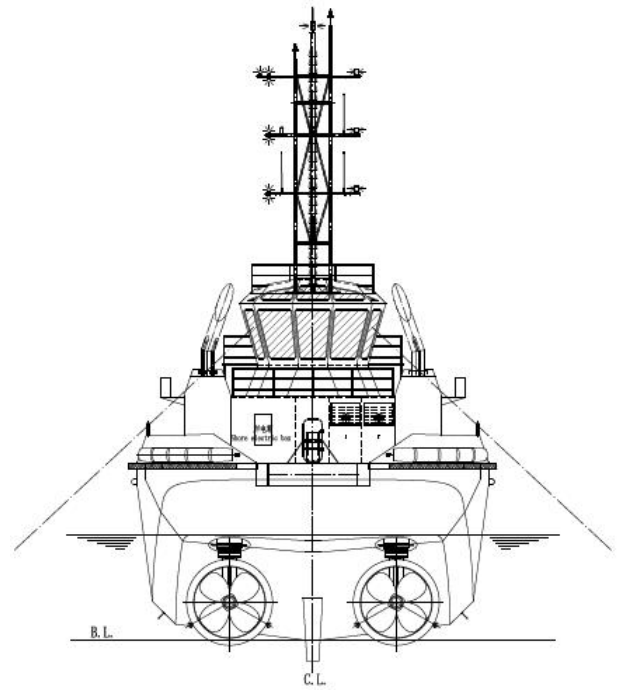
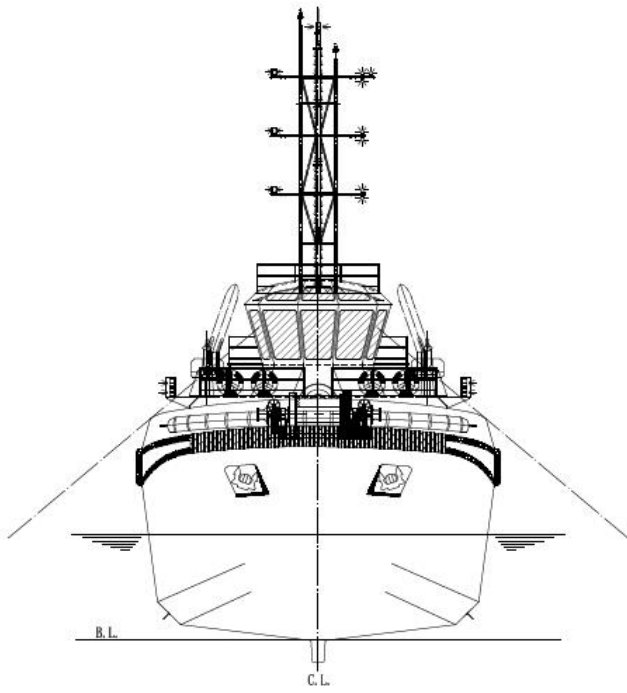
MAIN DECK 主甲板



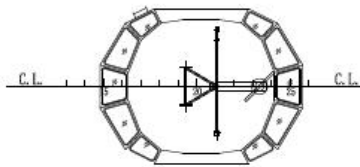
BELOW MAIN DECK 主甲板下



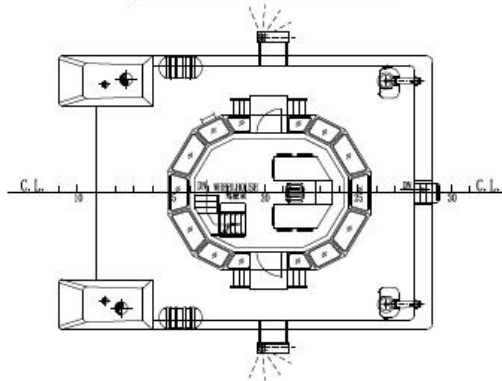
JANTLE MARINE



COMPASS DECK 罗经甲板



WHEELHOUSE DECK 驾驶甲板



JANTLE MARINE

Main Particulars

Length O.A.	30.00 m
Length B.P.	23.10 m
Beam MLD.	12.00 m
Depth MLD.	5.50 m
Accommodation	12 Ps
Design Draft	3.80 m
Max Draft	4.50 m
Trial Speed	~13.00 Kn
GRT	~399
NRT	~119

Main Capacity

F.O.	~240.00 m ³
F.W.	~70.00 m ³
FiFi foam	10.17 m ³
Spilled Oil dispersant	6.51 m ³
Lube Oil	3.04 m ³

Classification Notation:

BV I +HULL +MACH, AUT-UMS, Tug, Escort Tug, Special Service - Utility Vessel, Fire fighting ship 1, Water spraying, Harbour Operation

Navigation Areas:

Harbour Operation

Year Built:

2018, Ready for delivery

Main Machinery & Propulsion Unit

Main Engine

- Model	2X Caterpillar 3516C
- Power	2,575BHP (1920kW)@1,600rpm

Marine Gen. Sets

- Model	2X Caterpillar C7.1
- Power	150kW/ 400V/ 50Hz/ 3Φ

Harbour Gen. Sets

- Model	30MXDGBA
- Power	30kW/ 380V/ 50Hz/ 3Φ

ASD Propellers

- Maker	2X Rolls Royce
- Model	US205 P20 FP

Main Pump Sets

Oily Water Separator	1X 0.5m ³ /hr
Sewage Treatment Plant	1X 15 persons

Plant

External FIFI System (BV- FI-FI 1 class)

- Maker	FFS
- Firefighting Monitor	2×1200/300m ³ /hr(sea water/foam),
- Firefighting Pump	1×2760m ³ /hr@115mlc

Main Escort/Anchoring Equip

One set Hydraulic Escort/Towing /Anchor

Windlass Winch set

-Maker :	Jebsen & Jessen Offshore
-Anchor weight :	2 · 570 kg
-Diameter of anchor chain:	- Φ20.5 mm
-Rated hauling speed:	1.8t@0~10m/min
-Capacity:	-φ100mm×120m (P.P. Wire)(*)
-Brake Holding:	200t
-Rated pull:	30t @ 0~10 m/min

One set Disc type

short towing hook

One set Stern

Roller

- Φ0.8m × 3.0m

JANTLE MARINE

Main Radio & Nav. Equip.

Radar	1×JRC JMA-5212-6
Echo Sounder	1×JRC JFE-380
Speed Log	1×Yokogawa EML 500
Anemometer	1×RM. YOUNG 06206
GPS	1×JRC JLR-7500
Electric Horn	1×Ibuki ES300
GPS Compass	1×JRC JLR-21
Vertical Standard	1×CGT-165
Magnetic Compass	
Sound Power Tele.	1×12KSL
Public address system	1×KG-1D
AIS	1×JRC JHS-183
VHF telephone	1×JRC JHS 770S
NAVTEX	1×JRC NCR-333
Bridge Alarm	1×JIAXING KEXUN KBJ-3
SART	1×JOTRON TronSart20
EPIRB	1×JOTRON Tron60S
Portable VHF	2×ENTELE HT-649

Lifesaving & FiFi Equip.

- Lifesaving & FiFi equipment which are in compliance with the SOLAS requirements, Hong Kong Merchant Shipping Ordinance and class notation requirements
- CO₂ Fire Fighting System as per BV Rules
- Electric Fire Bilge Pump Set ability : 2 × 14m³/hr
- Spilled Oil Dispersant Boom

Air Conditioning System

- Equipped with centralized air conditioner for Wheelhouse, Mess Room, Captain Room and Chief Eng. Room and other crew rooms
- Equipped split-type air cooler for engine centralized control room.

Cabin & main living facility

- 2×Senior Officer Cabin for single
- 5×Crew Cabin for two men
- 1×Horizontal dual temperature freezer /refrigerator with workbench
- 2×Single head Induction cooker
- 1×Centralized electric water heater 80L
- 1×Track type Wheelhouse chair

(Remarks (*) are as additional items, which are not included in the construction of the actual vessel and furnish. If the buyer of this vessel needs to add these additional items and appoints shipyard to do so, the buyer must additionally pay the fee to the shipyard.)

(Particulars given herein are believed to be correct but not guaranteed. Owners reserve the rights to amend specifications without notification.)

Specification Outline of 5150BHP HANDYSIZE ASD TUG(E)

Updated date: 2018/11/22
