

JANTLE MARINE

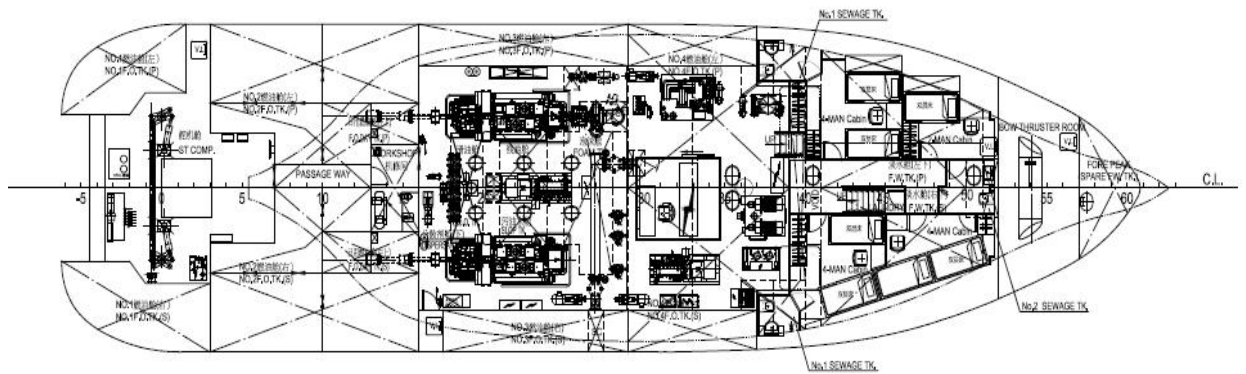
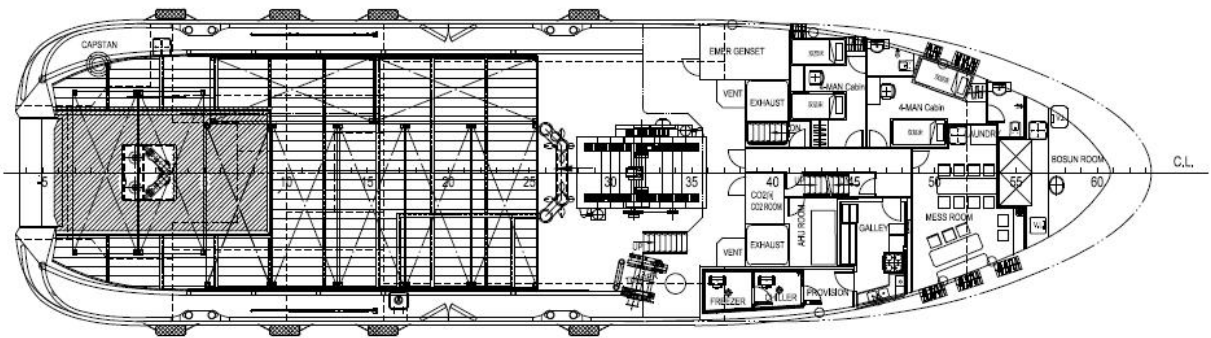
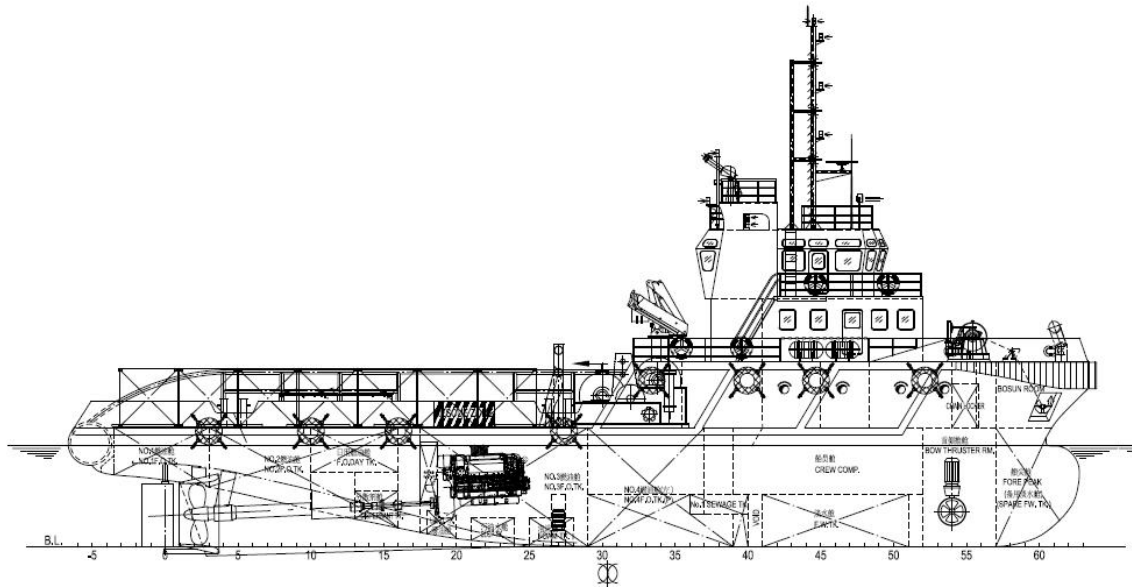
SPECIFICATION OUTLINE

4400BHP UTILITY AHTS

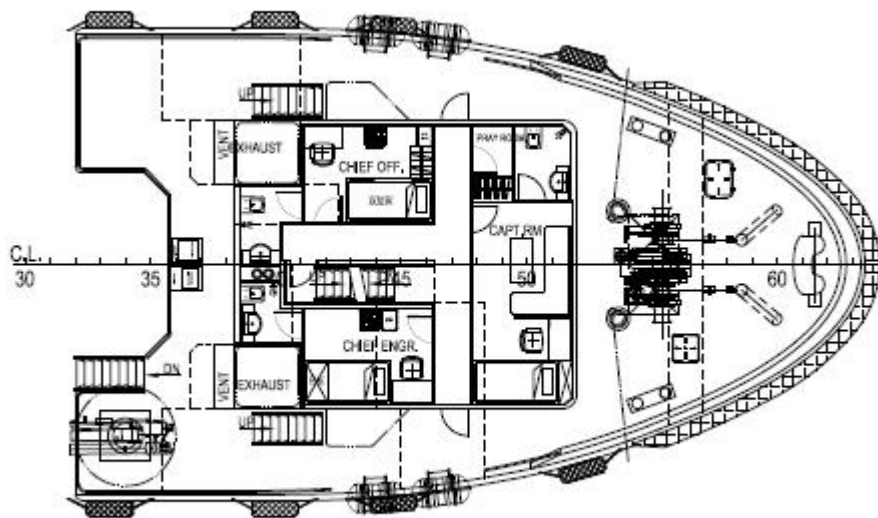
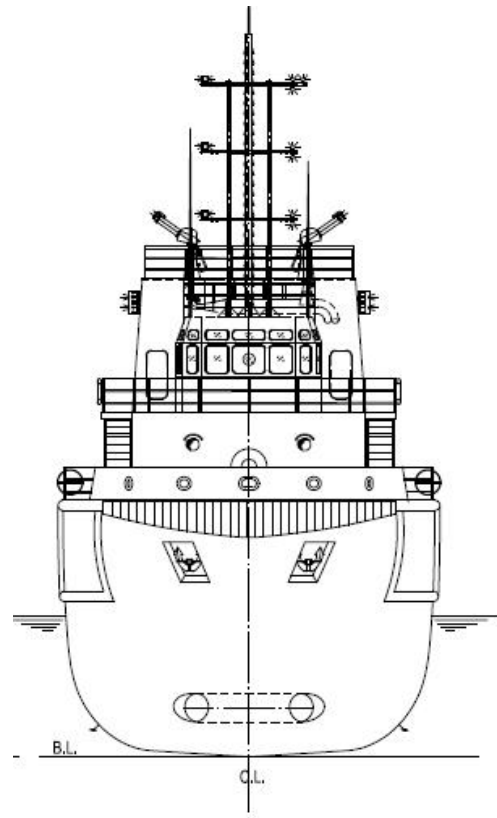
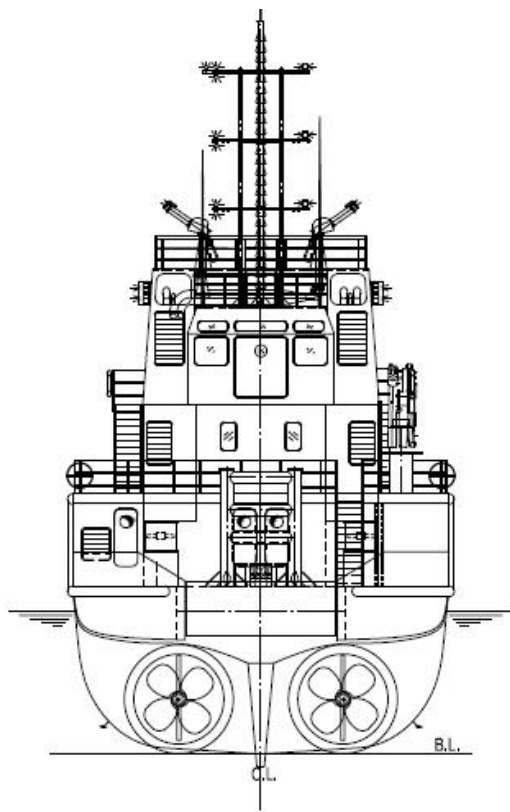


JANTLE MARINE

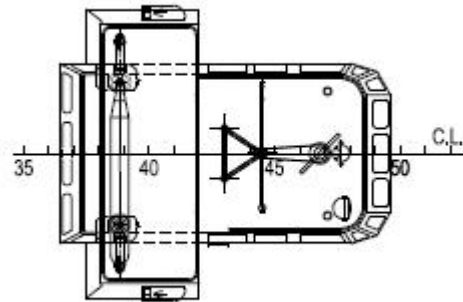
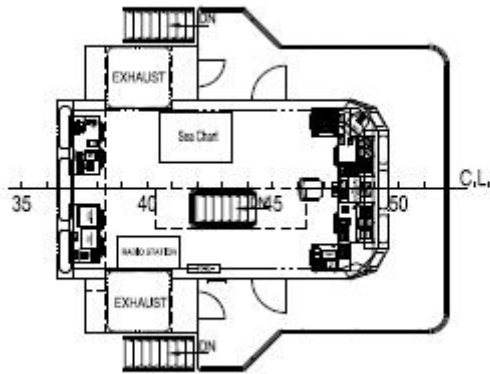
General Arrangement



JANTLE MARINE



JANTLE MARINE



Main Particulars

Length O.A.	42.00 m
Length B.P.	36.45 m
Beam MLD.	11.00 m
Depth MLD.	4.90 m
Accommodation	26 Ps
Design Draft	3.50 m
Max Draft	4.15 m
Trial Speed	~15.51 Kn
GRT	~497
NRT	~149

Main Capacity

F.O.	~326.02 m ³
F.W.	~83.32 m ³
FiFi foam	9.07 m ³
Dispersant	5.77 m ³

Daily F.O. tank(P)	10.14 m ³
Daily F.O. tank(S)	8.24 m ³
Lub. Oil	~3.17 m ³
Cargo deck area	~160.00 m ²
Cargo deck load	5.00 ton/m ²
Deck thickness of anchor handling area	22 mm

Classification Notation:

BV I +HULL +MACH Tug, Fire Fighting Ship 1, Water Spraying, Special Service - Anchor Handling Vessel/Offshore Support Vessel/Standby Vessel, unrestricted navigation

Navigation Areas:

UNRESTRICTED

Year Built:

2018, Ready for delivery

Main Machinery & Propulsion Unit

Main Engine

- Model	2×Cummins QSK60-M
- BHP	2200BHP @1800RPM

Reduction Gear Box

- Model	2×Twin Disc MGX5600
- Ratio	5.76 : 1

Main Deck Machinery

1 X Electric anchor windlass

-Bow anchor	2 × 660kg
-Anchor chains:	Φ26mm × 275m, AM2

1 X Hydra. Capstan

-Φ22 mm,	5ton × 15 m/min
----------	-----------------

1 X Hydra. Tugger Winch

JANTLE MARINE

Fixed Pitch Nozzle 2×4 blades

Propeller

Bow Thruster

1×JYG16FP(Front/aft control console)

- Power 200kW

- Thrust 3.5ton

Main Marine Genset 2×Cummins 240MXDG

Power 240kW/ 400V/ 50Hz/ 3Φ

Emergency/harbour 1×Cummins CCFJ-60Y

Genset Power 60kW / 400V/ 50Hz/ 3Φ

Electro-hydraulic 1×3.5 T-M

steering-gear Maker Marine Equipment

Other main pump sets Desmi

-Φ22 mm,10/5ton × 15 m/min

1 X Hydra. Anchor handling & Towing Winch set

-Type: Double drum

-Reel Storage (Wire):Φ52mm×1000m

-Steel Wire equipped on actual

vessel: Φ52mm × 600 m)

-Line pulling : 65ton -

Brake holding : 180ton

1 X Hydraulic Folding Type Crane(*)

-SWL0.95ton@11.60m

1 X Hydraulic Strong Jaw & Towing Pin

- Capacity 200ton,

1 X Stern Roller Φ1.6M × 4m, SWL 200ton

Main Radio & Nav. Equip.

Radar 1×Furuno FAR-2117

such Echo Sounder 1×Furuno FE-700

Speed Log 1× Furuno DS-80

Anemometer 1×Furuno FI-50

GPS 1×Furuno GP-150

Electric Horn 1×IBUKI ES300

- Autopilot(*) 1×Navitron NT-777

Vertical Periscope 1×CGT-165

Reflector Compass

Sound Power Tele. 1×HSQ-1

Public address system 1×CKY

AIS 1×Furuno FA-150

- **A3 sea GMDSS**

MF/HF SSB 1×Furuno FS-1570

Inmarsat-C (SSAS) 1×FELCOM-15(IC-307)

Inmarsat-C 1×FELCOM-15

VHF telephone 2×Furuno FM-8800S

NAVTEX 1×Furuno NX-700B

EPIRB 1×McMurdo E 5

Portable VHF 2×McMurdo R 5

SART 1×McMurdo S 4

Main Lifesaving & FiFi Equip.

- In compliance with the SOLAS requirements as regards GRT class Anchor Handling Tug, Lifesaving & FIFI equipment.

- **Electric remote control water/foam dual purpose**

Monitor: 2×1200m³/h

- **External FI-FI Pump:**

Single step horizontal centrifugal pump 1 × 2450m³/h.

Air Cooler System

- Centralized air conditioning system (cooling) for wheelhouse, mess and accommodation spaces

- Additional split-type air conditioner for engine centralized control room.

Cabin & Auxiliary Cabins

2x Single Senior Officer Cabins

2×two men Cabins 5× four men Cabins

1×Combined Provisions Freezer

1×Emergency Generator Room

1×Engine Centralized Control Room

1×Slop Tank

1×Residual Oil Tank

1×Residual Oil Tank

2×Sanitary Sewage Tank

1×Foam Tank

1×Dispersant Tank

1×AHU Room

JANTLE MARINE

(Remarks (*) are as additional items, which are not included in the construction of the actual vessel and furnish. If the buyer of this vessel needs to add these additional items and appoints shipyard to do so, the buyer must additionally pay the fee.)

(Particulars given herein are believed to be correct but not guaranteed. Owners reserve the rights to amend specifications without notification.)

Specification Outline of 4400BHP UTILITY AHTs

Updated date: 2018/11/27
