



## **Technical Proposal of 300ft × 90ft × 18ft DECK CARGO BARGE**

### **1. GENERAL DESCRIPTION**

The vessel is an unmanned dump barge suitably equipped for carrying deck cargo for unrestricted services. The barge is all welded steel construction. It has flush deck and twin skegs. The main hull is divided by six (6) transverse W.T. bulkheads and three (3) longitudinal W.T. bulkheads into twenty-six (26) compartments.

### **2. PRINCIPAL PARTICULARS**

Length O.A	:	91.50 m
Breadth MLD	:	27.46 m
Depth MLD	:	5.50 m
Deadweight	:	8200 Ton (approx)
Deck loading	:	15 Ton/m <sup>2</sup>

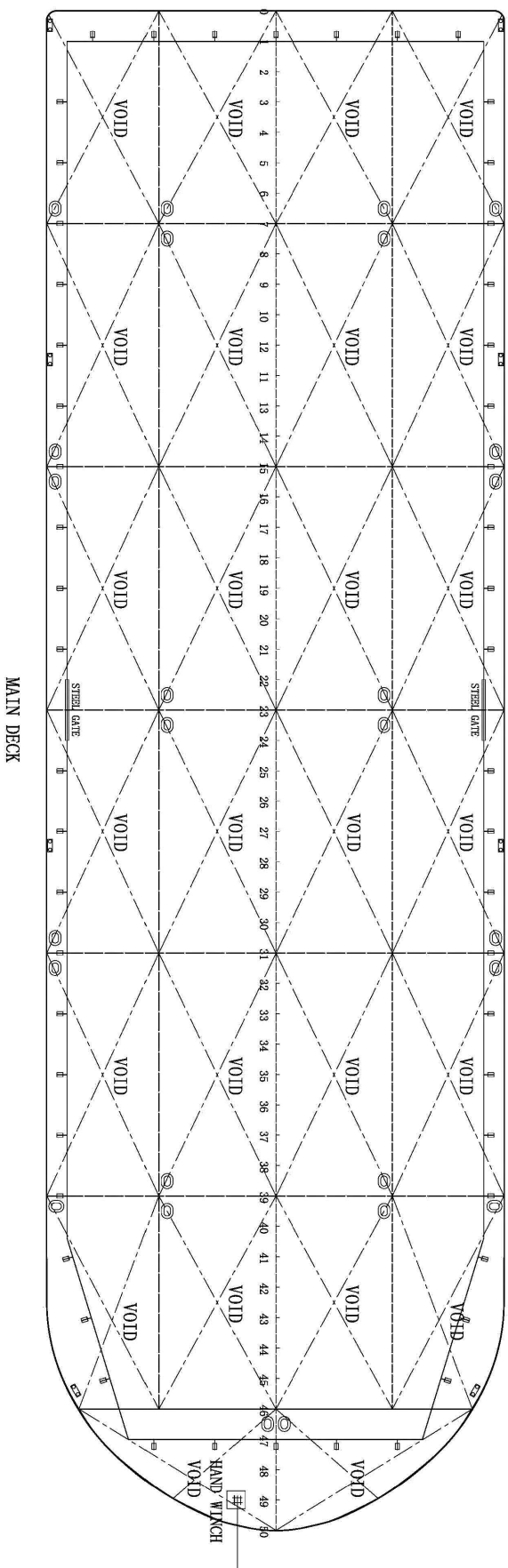
### **3. CLASSIFICATION**

The vessel is designed suitable for registration as a cargo barge and constructed in accordance with the latest rules and regulations of **ABS** for unrestricted services and to their special Survey to hull for Class for Unmanned Deck Barge.

Notation symbol +A1 Barge.

### **4. SCANTLINGS**

Bottom Plate	:16 mm	BHD Long	:L125×75×7
Deck Plate	:16 mm	Bottom transvs	:485×9+127 FLG
Side shell	:12 mm	Side web	:460×9+105 FLG
Longitudinal. BHD	:8 mm	Deck transvs	:560×10+155FLG
Transverse BHD	:8 mm	Long. BHD web	:460×9+105FLG
Bottom Long	:L125×75×10	Stanchion	:250×250×H 9×14
Side Long	:L125×75×10	Diagonals	:250×250×H 9×14
Deck Long	:L200×125×12	Bilges chine	:Φ50 R.B.



Loa	总长	91.5m
Buid	型宽	27.46m
Dmid	型深	5.5m
FRAME SPACE	间距	1830mm
DECK LOADING	甲板负荷	15ton/m <sup>2</sup>
CLASSIFICATION	船级	ABS
DEADWEIGHT	载重吨	8200ton (approx)

[illegible]



***JANTLE MARINE***

---

