



## SPECIFICATIONS

### GENERAL

Name	
Flag	Indonesia
Port of Registry	BATAM
Year	2021
Place of Built	
IMO NUMBER	
Class Society	ABS

### PARTICULARS

Type of Vessel	Oil Tanker
DWAT (MT), Draft (meters)	6.500 mts at 6.00 m
Gross Tonnage	-
LOA	108.00 m
Beam	19.20 m
Capacity of Ballast Tanks (cbm)	3.893,60 m <sup>3</sup>
Capacity Bunkers	400 m <sup>3</sup> (98%)
Capacity Fresh Water	266,60 m <sup>3</sup>

### CARGO ARRANGEMENTS

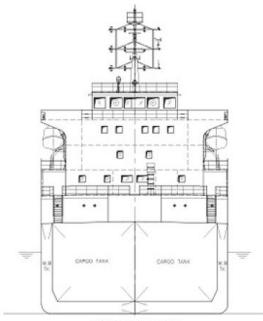
Cargo Tanks	10
Total Capacity in cubic meters	8.335 m <sup>3</sup>
Main Cargo Pumps	Three Units: Taiko Kikai CSL-300 SP - Capacity: 300 m <sup>3</sup> / hrs
Stripping Pump	Two Units: Taiko Kikai CSL-50P - Capacity: 50 m <sup>3</sup> /hrs
Cargo Gear Manifold: Load / Reach	Jiangsu Masada - SWL 5 Ton - Working Radius 3 to 15 mtrs

### MACHINERY

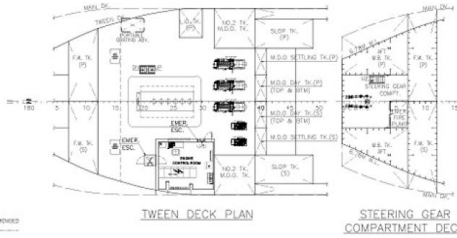
Main Engine	Hanshin Diesel LH46L - 2.943 kW at 200 rpm
Propeller	Fixed Pitch 4 Blades
Diesel Generators	Three units: Yanmar 6NY16L-EW, Power 441 kW/1200 rpm

### PERFORMANCE

Speed Ballast	12.30 knots
Speed Laden	12.00 knots

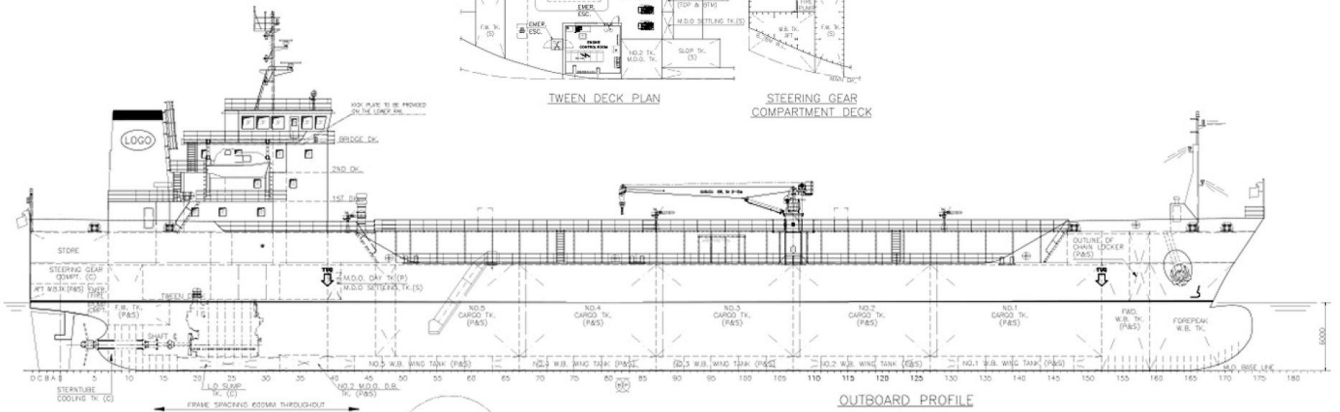


MIDSHIP PLAN  
(DECK 47)



TWEEN DECK PLAN

STEERING GEAR  
COMPARTMENT DECK



OUTBOARD PROFILE



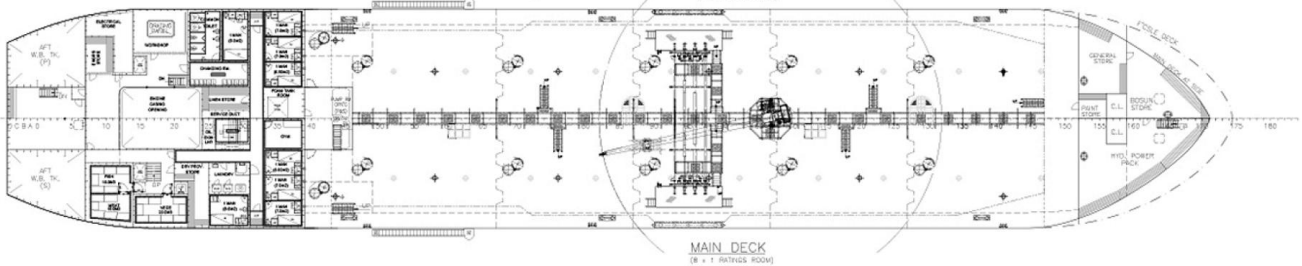
POOP DECK  
(2 x 1 BATHING ROOM)

1ST DECK  
(2 x 1 OFFICER ROOM  
1 x 1 BATHING ROOM)

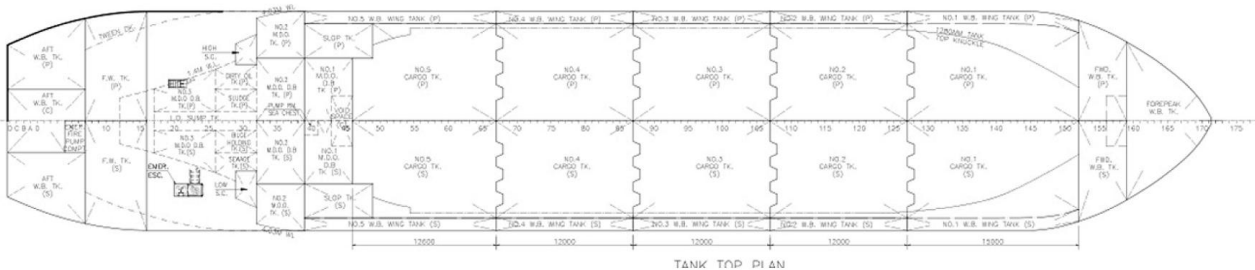
2ND DECK  
(2 x 1 OFFICER ROOM  
1 x 1 OFFICER ROOM)

NAV. BRIDGE DECK

FORECASTLE DECK



MAIN DECK  
(8 x 1 BATHING ROOM)



TANK TOP PLAN

Davis Zhao  
CEO & Managing Director  
Anhui Jantle Marine Engineering Co., Ltd.  
Rm1901-1903, Tower C, Fortune Plaza, No. 278 Suiyi Rd., Hefei  
Anhui, China 230041  
T+86 551 6577 6343  
F+86 551 6577 6311  
M+86 156 5609 9909  
skzhao@jantlemarine.com