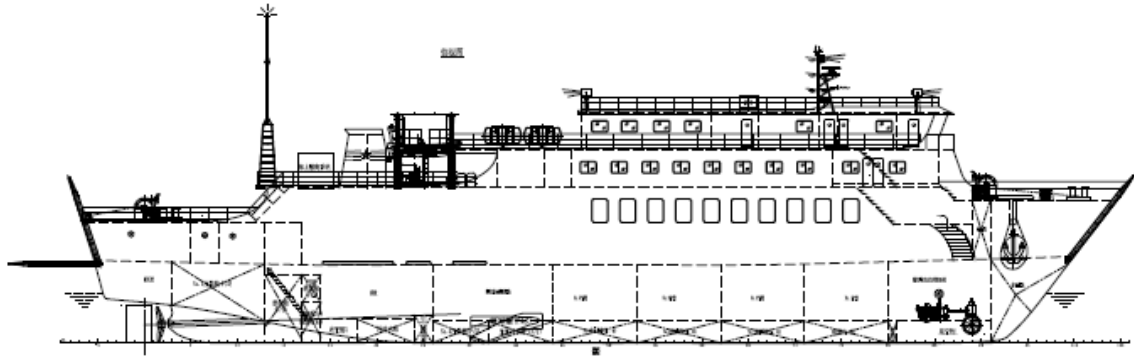




ANHUI JANTLE MARINE ENGINEERING CO., LTD

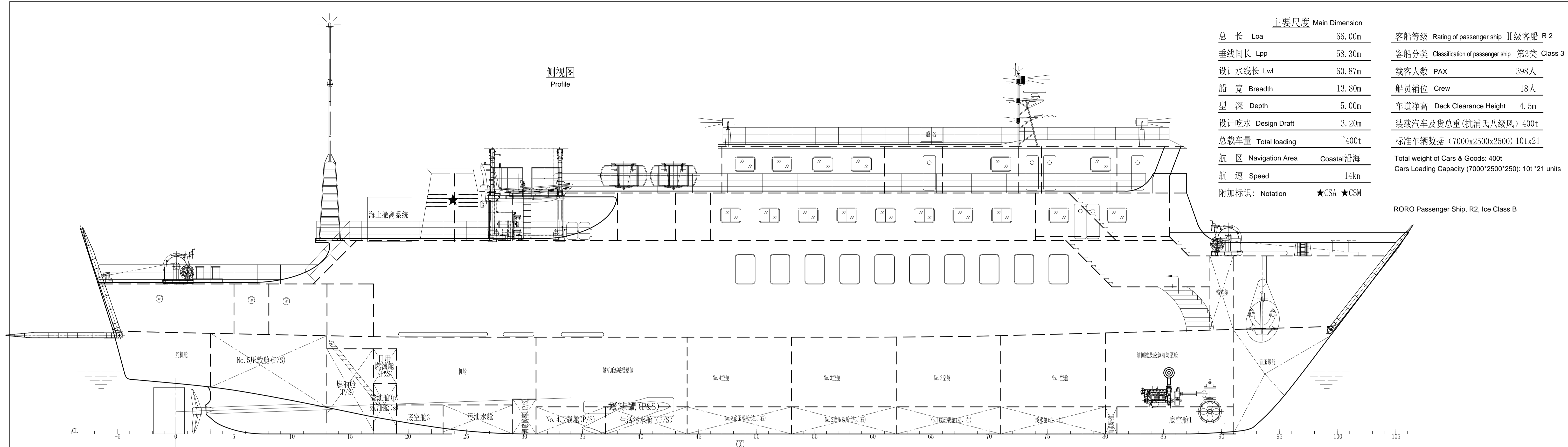
安徽杰涛船舶工程有限公司

66M RORO FERRY (RESALE)



Ship's Particulars

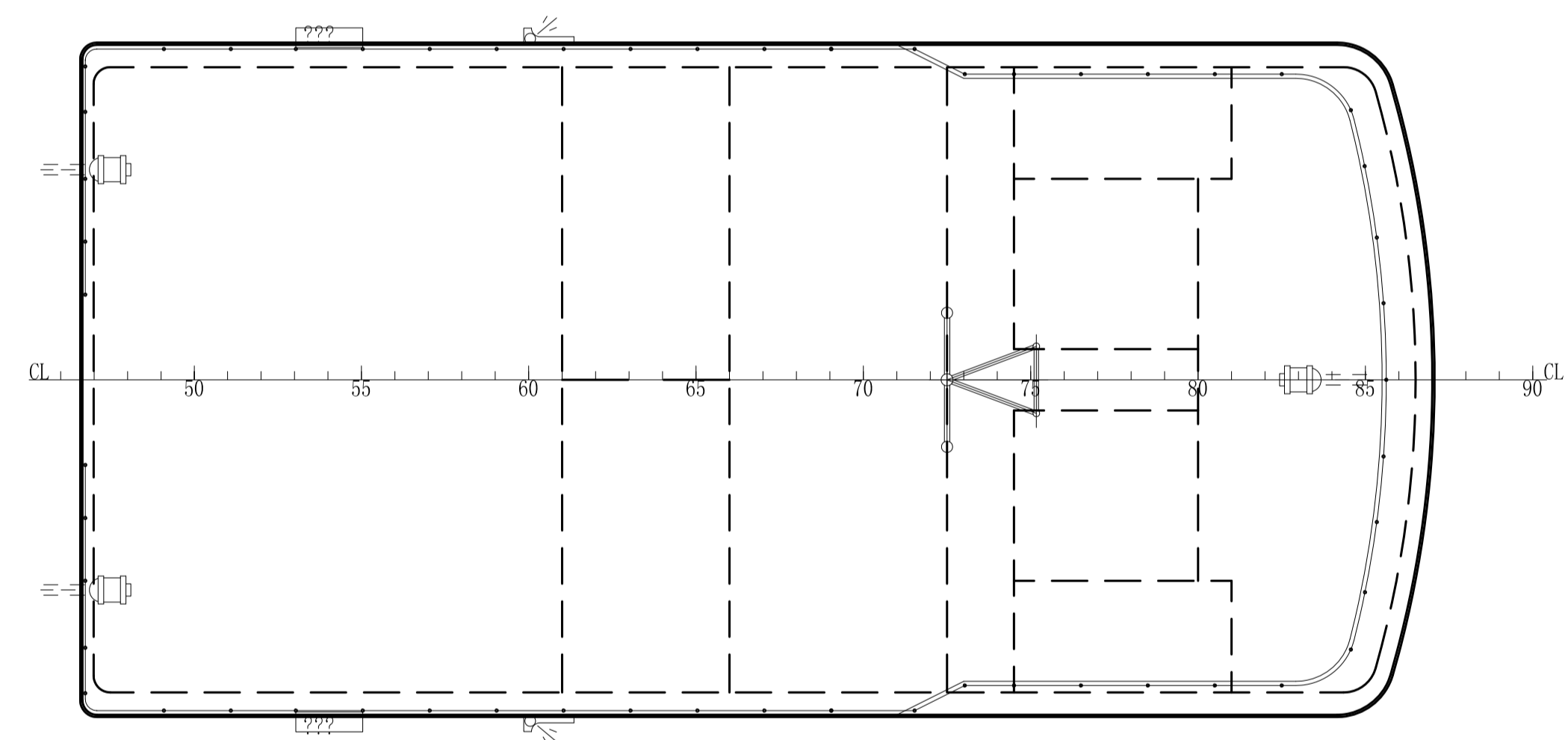
Flag	:	China
Class	:	CCS, *CSA, *CSM, RORO passenger ship, R2, Ice Class B
Built	:	2019
LOA / L _{PP} / B / D	:	66.00 / 58.30 / 13.80 / 5.00 m
GRT	:	2489
DWT / Draft	:	1866 t / 3.20 m
M/E	:	2 sets, ZIBO LB8250ZLC-6 1324kW*750rpm
Main G/E	:	2 sets, Weichai WP 10, 180kW, 400V-3P-50Hz
Harbor G/E	:	1 set, Weichai WP 6, 40kW, 400V-3P-50Hz
Emer. G/E	:	1 set, Weichai 120kW, 400V-3P-50Hz
FO Consumption	:	abt. 200+5% g/kW.h for ME at CSR on service speed
Endurance	:	700Nm at service speed
Passenger	:	416 Pax (passenger 398 (seat) + Crew 18 Pax)
Total weight of Cars & Goods (Anti wind Grade 8)	:	400 t
Car loading capacity (7000*2500*2500)	:	10 t *21 units
Ramp:		
Tank capacity	:	MDO 35t / FW 35 t
Ballast pump	:	50 m ³ /h * 2 sets
Deck Clearance height	:	4.5 m
Speed	:	design 14 knots
Nav. Equipment	:	Radar, Magnetic compass, Echo sounder, ECDIS, GPS, AIS, VDR



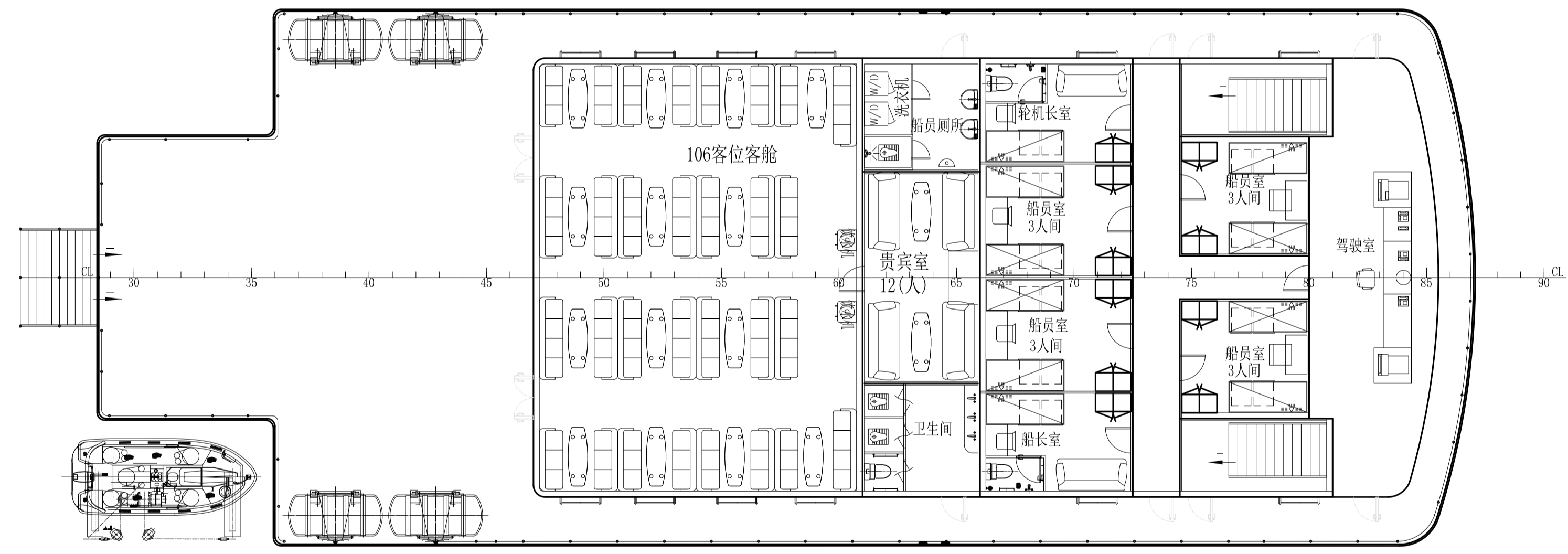
主要尺度 Main Dimension		客船等级 Rating of passenger ship	II级客船 R2
总长 Loa	66.00m	客船分类 Classification of passenger ship	第3类 Class 3
垂线间长 Lpp	58.30m	载客人数 PAX	398人
设计水线长 Lwl	60.87m	船员铺位 Crew	18人
船宽 Breadth	13.80m	车道净高 Deck Clearance Height	4.5m
型深 Depth	5.00m	装载汽车及货总重(抗浦氏八级风) 400t	
设计吃水 Design Draft	3.20m	标准车辆数据 (7000x2500x2500) 10t x 21	
总载车量 Total loading	~400t	Total weight of Cars & Goods: 400t	
航区 Navigation Area	Coastal沿海	Cars Loading Capacity (7000*2500*2500): 10t * 21 units	
航速 Speed	14kn		
附加标识: Notation	★CSA ★CSM		

RORO Passenger Ship, R2, Ice Class B

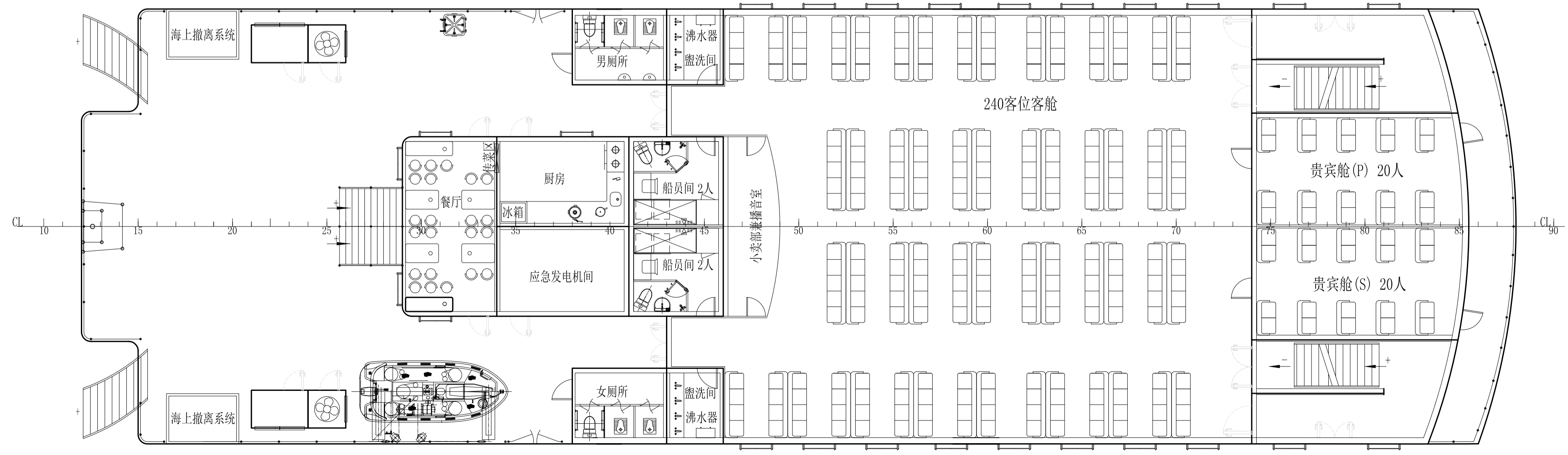
罗经甲板
Compass Deck



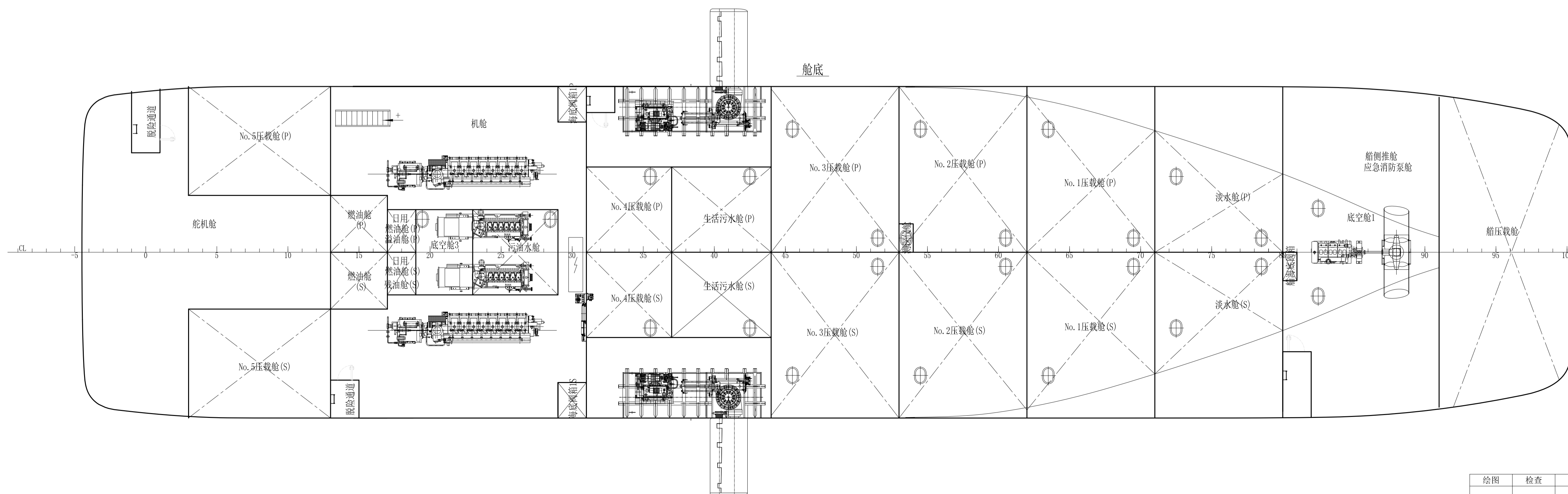
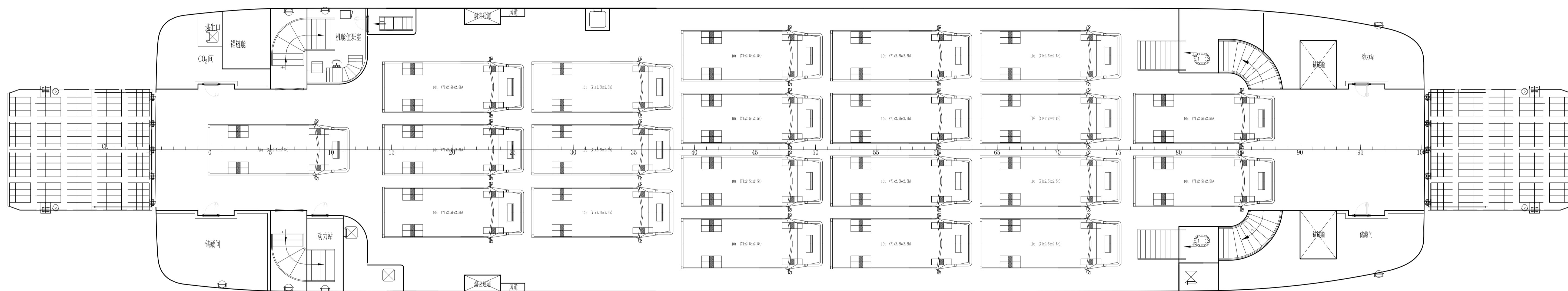
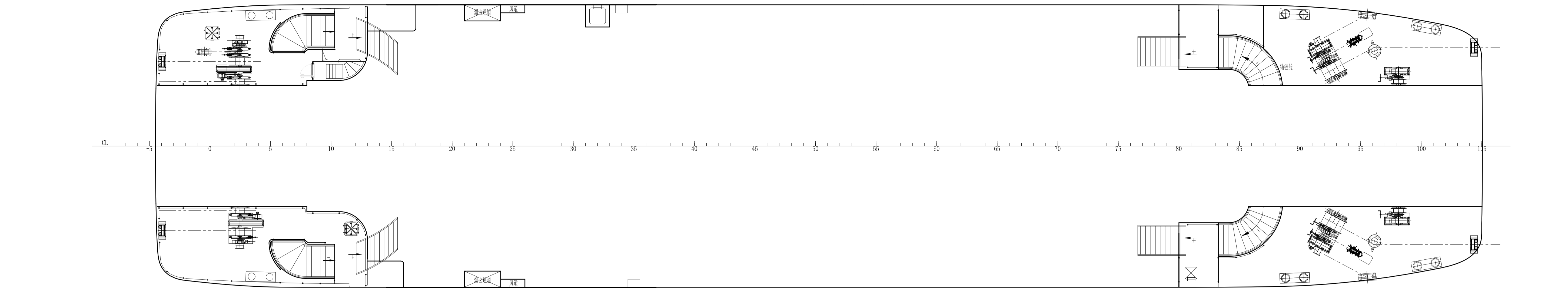
驾驶甲板
Bridge Deck



乘客甲板
Passenger Deck



版本	修改内容	修改	日期
船名:	66米客滚船 66m RORO FERRY		
图名:	总布置图 GENERAL ARRANGEMENT		
船级社: CCS	船厂号:		
设计:			
绘图	检查	审定	比例
			图号
			版本: 0
			图幅: A1
			第 1 页 共 2 页



绘图	检查	审定	比例	图号	版本: 0
			1:100		图幅: A1
					第 2 页 共 2 页