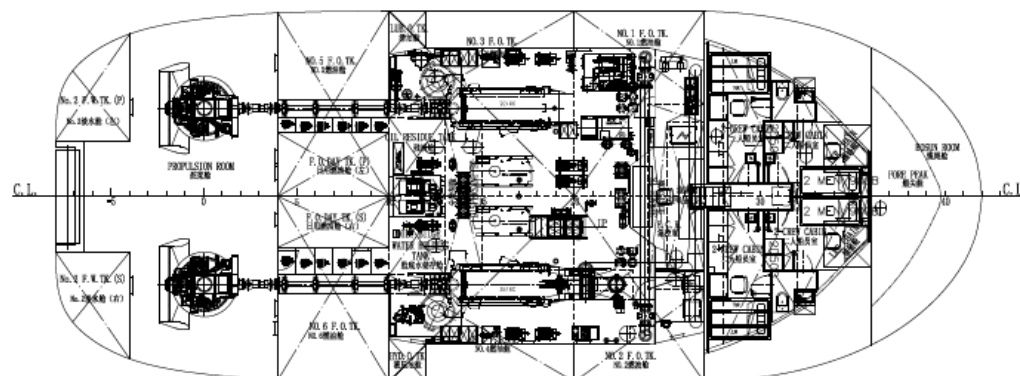


**SPECIFICATION OUTLINE**

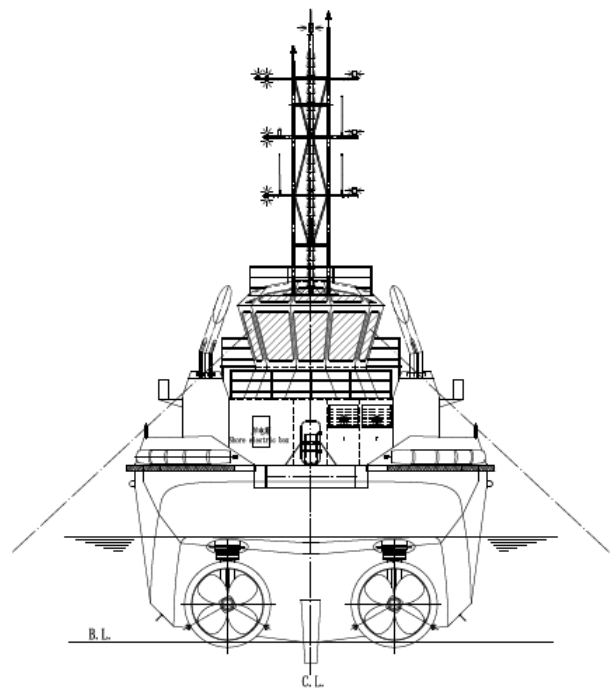
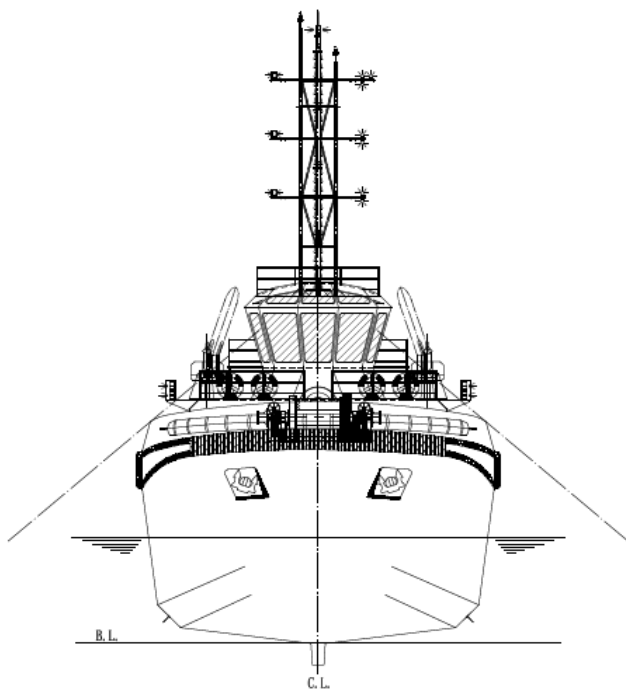
**5150BHP HANDYSIZE ASD TUG**



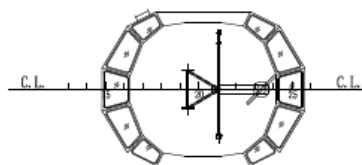


# JANTLE MARINE

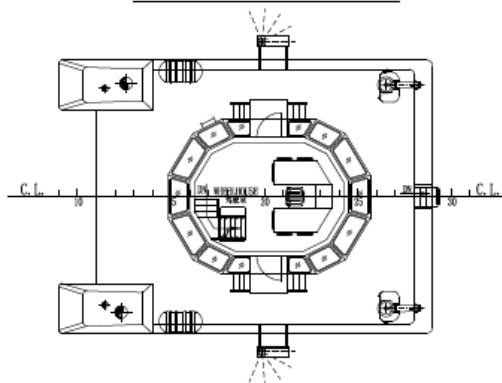
---



COMPASS DECK 罗经甲板



WHEELHOUSE DECK 驾驶甲板



# JANTLE MARINE

Main Particulars		Main Capacity	
Length O.A.	30.00 m	F.O.	~240.00 m <sup>3</sup>
Length B.P.	23.10 m	F.W.	~70.00 m <sup>3</sup>
Beam MLD.	12.00 m	FiFi foam	10.17 m <sup>3</sup>
Depth MLD.	5.50 m	Spilled Oil	6.51 m <sup>3</sup>
Accommodation	12 Ps	dispersant	
Design Draft	3.80 m	Lube Oil	3.04 m <sup>3</sup>
Max Draft	4.50 m		
Trial Speed	~13.00 Kn		
GRT	~399		
NRT	~119		

## Classification Notation:

BV I +HULL +MACH, AUT-UMS, Tug, Escort Tug, Special Service - Utility Vessel, Fire fighting ship 1, Water spraying, Harbour Operation

## Navigation Areas:

Harbour Operation

## Year Built:

2018, Ready for delivery

## Main Machinery & Propulsion Unit

### Main Engine

- Model 2X Caterpillar 3516C
- Power 2,575BHP (1920kW)@1,600rpm

### Marine Gen. Sets

- Model 2X Caterpillar C7.1
- Power 150kW/ 400V/ 50Hz/ 3Φ

### Harbour Gen. Sets

- Model 1 X Cummins - Onan
- Model 30MXDGBA
- Power 30kW/ 380V/ 50Hz/ 3Φ

### ASD Propellers

- Maker 2 X Rolls Royce
- Model US205 P20 FP

### Main Pump Sets

- Oily Water Separator 1X 0.5m<sup>3</sup>/hr
- Sewage Treatment 1X 15 persons

### Plant

### External FIFI System (BV– FI-FI 1 class)

- Maker FFS
- Firefighting 2×1200/300m<sup>3</sup>/hr(sea water/foam),  
Monitor
- Firefighting Pump 1×2760m<sup>3</sup>/hr@115mlc

## Main Escort/Anchoring Equip

### One set Hydraulic Escort/Towing /Anchor Windlass Winch set

- Maker : Jebsen & Jessen Offshore
- Anchor weight : 2 · 570 kg
- Diameter of anchor chain: - Φ 20.5 mm
- Rated hauling speed: 1.8t@0~10m/min
- Capacity: -φ100mm×120m  
(P.P. Wire)(\*)
- Brake Holding: 200t
- Rated pull: 30t @ 0~10 m/min

### One set Disc type short towing hook

### One set Stern Roller

- Φ0.8m × 3.0m

# JANTLE MARINE

## Main Radio & Nav. Equip.

Radar	1×JRC JMA-5212-6
Echo Sounder	1×JRC JFE-380
Speed Log	1×Yokogawa EML 500
Anemometer	1×RM. YOUNG 06206
GPS	1×JRC JLR-7500
Electric Horn	1×Ibuki ES300
GPS Compass	1×JRC JLR-21
Vertical Standard	1×CGT-165
Magnetic Compass	
Sound Power Tele.	1×12KSL
Public address system	1×KG-1D
AIS	1×JRC JHS-183
VHF telephone	1×JRC JHS 770S
NAVTEX	1×JRC NCR-333
Bridge Alarm	1×JIAXING KEXUN KBJ-3
SART	1×JOTRON TronSart20
EPIRB	1×JOTRON Tron60S
Portable VHF	2×ENTEL HT-649

## Lifesaving & FiFi Equip.

- Lifesaving & FiFi equipment which are in compliance with the SOLAS requirements, Hong Kong Merchant Shipping Ordinance and class notation requirements
- CO<sub>2</sub> Fire Fighting System as per BV Rules
- Electric Fire Bilge Pump Set ability : 2 X 14m<sup>3</sup>/hr
- Spilled Oil Dispersant Boom

## Air Conditioning System

- Equipped with centralized air conditioner for Wheelhouse, Mess Room, Captain Room and Chief Eng. Room and other crew rooms
- Equipped split-type air cooler for engine centralized control room.

## Cabin & main living facility

- 2×Senior Officer Cabin for single
- 5×Crew Cabin for two men
- 1×Horizontal dual temperature freezer /refrigerator with workbench
- 2×Single head Induction cooker
- 1×Centralized electric water heater 80L
- 1×Track type Wheelhouse chair

(Remarks (\*) are as additional items, which are not included in the construction of the actual vessel and furnish. If the buyer of this vessel needs to add these additional items and appoints shipyard to do so, the buyer must additionally pay the fee to the shipyard.)

(Particulars given herein are believed to be correct but not guaranteed. Owners reserve the rights to amend specifications without notification.)

Specification Outline of 5150BHP HANDYSIZE ASD TUG(E)

Updated date: 2018/11/22